



A Report to Our Citizens 2013

We make safer places for you to live, work and play.



Sgt. John Laraway
Star Police Chief

Message From Chief Laraway

As the economy continues to improve, Star's population grows and new businesses open in our community, we want to make sure we maintain the level of service you expect from your police department. We are always looking for ways to leverage resources through new partnerships. One of the most promising new partnerships is with the Ada County Sheriff's Office ACTION Team made up of detectives and deputies dedicated to working with victims, neighbors and community partners on persistent crime problems in North Ada County. Just as im-

portant are long-standing partnerships with our public safety partners. We work closely with the City of Star, Star Fire Department, Ada City-County Emergency Management and area schools on emergency preparedness. We want to make sure we are ready – from communication to emergency response – to manage any type of crisis in our community.

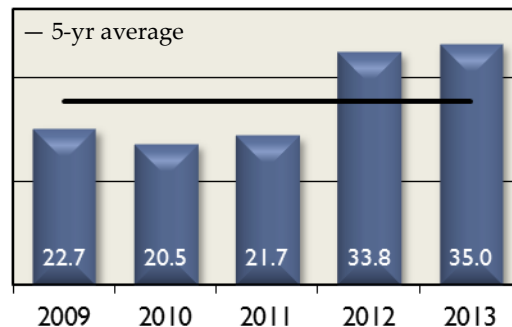
By being prepared and making the most of our resources, we can mitigate the growing pains and ensure Star stays a safe place for you to live, work and play.

Patrol Team

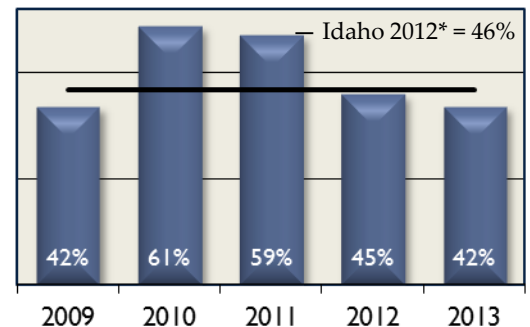
Don Clough
Dagan Fluke
Ian Hale
Aaron Williams

Crime and Clearance

crimes per 1,000 population



% of crimes solved



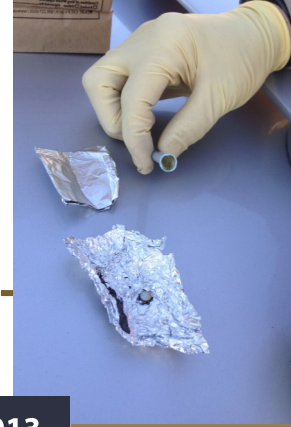
	2009	2010	2011	2012	2013
Total Crimes	139	119	128	204	227
Person	43	44	30	46	70
Property	92	64	70	123	118
Society	4	11	28	35	39



*Crime in Idaho 2012, Uniform Crime Reporting Section, Bureau of Criminal Identification, Idaho State Police at <http://www.isp.idaho.gov/BCI/ucr/crimeinidaho2012.htm>

Getting Drugs Off the Street

We partnered with the Ada County Metro Narcotics Team to investigate and shut-down a meth trafficking ring in the Treasure Valley. Deputies arrested five people who were convicted in federal court on multiple drug charges and will spend up to 30 years in prison. More importantly, we helped stop the influx of \$1.3 million worth of dangerous drugs into Star and surrounding communities.



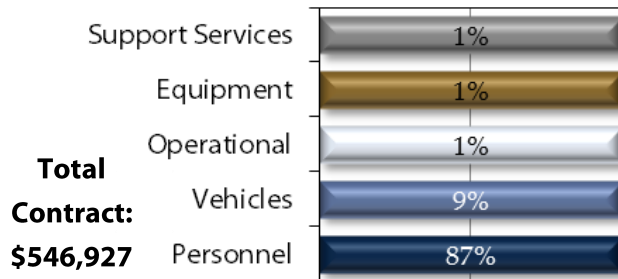
Police Activity

	2009	2010	2011	2012	2013
Citizen Calls for Service	1,178	1,214	1,157	1,298	1,480
Proactive Policing Contacts	5,546	6,370	6,509	8,337	8,349
Arrests	101	112	135	153	132
Traffic Crashes	11	21	14	18	29

Average response time to high priority emergency calls:
3 min 14 sec

Star Police FY13 Budget

\$89 per resident vs. \$215 Treasure Valley average*



*Based on FY13 proposed budgets and COMPASS population estimates for Garden City, Boise, Meridian, Nampa and Caldwell

Safer Roads for Your Commute

Our traffic enforcement efforts usually focus on aggressive or reckless driving – behaviors that are likely to lead to crashes. Driver inattention also plays a significant role in many collisions. It is no surprise that most crashes in Star occur along our busiest roads, Highway 44 and Star Road, during the afternoon commute from school and work. Help us keep Star roads safe by eliminating distractions while you drive.



City of Star Police

www.adasheriff.org/AboutUs/CityofStarPolice.aspx

10769 W State Street

Star, ID 83669

Dispatch: 377-6790

