

CITY OF STAR



POLICE



2011
ANNUAL REPORT

Making safer places for you to live, work and play.



**CHIEF
JOHN LARAWAY**

“Raising a family today is challenging. As a parent, I know the most important thing I can do is provide a safe place for my children to grow up. It is clear to me the people of Star want the same for all of the children living in our community. That is one of the reasons I wanted to be your chief of police.

As you look at the 2011 annual report, you will see that Star Police is committed to providing families and neighbors a safe place to live, work and play. Our deputies work each and every day to decrease crime in our community. We appreciate the partnerships we have with city leaders and citizens that help make that possible.”

-Chief John Laraway

Sgt. John Laraway was named Chief of Police in Star in December 2011 to replace the former chief, Sgt. Ken Ramage.



**CHIEF
Sergeant
John Laraway**

**GOLD TEAM
Dagan Fluke
Ian Hale**

**RED TEAM
Justin Elliot
Shannon Miller**



**SHERIFF
GARY RANEY**

“In a slow economy, every agency and organization is expected to tighten their budgets and cut costs. The Ada County Sheriff’s Office has shared the economic struggles with our communities over the last few years, but we have kept costs for our contract cities very low while continuing to do exceptional police work.

Public safety is not only a primary responsibility of government, but it is also a fundamental expectation of the men and women in the communities we serve. In times of uncertainty, we want to be a constant -- always providing the highest quality of policing services as efficiently as possible. We do that by managing our business well, always looking for ways to do things better and smarter and staying focused on what matters most.

We take seriously the trust you put into Star Police. This annual report is a snapshot of our success last year. The City of Star is a wonderful community, and we are proud to be a part of it.”

- Sheriff Gary Raney



CITY OF STAR POLICE

Did you know that most vehicle burglaries are preventable? That's because a majority of stolen property is taken from cars and trucks that have been left unlocked. "Criminals walk from car to car looking for valuable property sitting in plain view. If the door is unlocked they can open it, grab the property and be gone within seconds. Thieves can get through an entire subdivision in just a few minutes," said Star Police deputy Justin Elliot. "The good news is that crimes of opportunity like this are completely preventable."

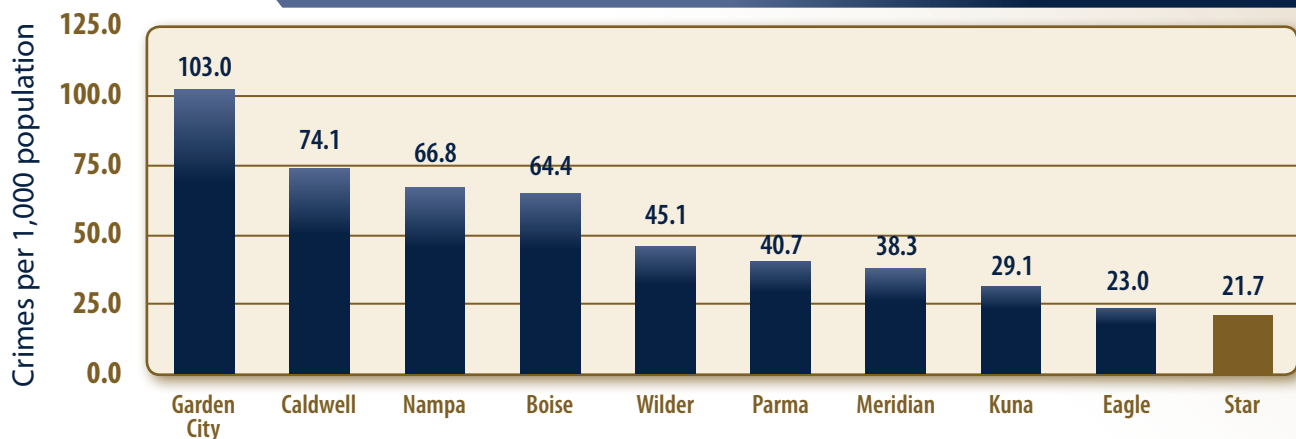
Help keep Star one of the safest cities in the Treasure Valley – lock your vehicles and take valuables inside!



ANNUAL CRIME RATE PER 1,000 RESIDENTS

| CRIME TYPE | 2007 | 2008 | 2009 | 2010 | 2011 |
|--|--------------|--------------|--------------|--------------|--------------|
| Person | 10.8 | 9.3 | 7.1 | 7.6 | 5.1 |
| Property | 22.5 | 14.6 | 15.0 | 11.0 | 11.9 |
| Society | 3.2 | 1.9 | 0.6 | 1.9 | 4.7 |
| TOTAL | 36.6 | 25.8 | 22.7 | 20.5 | 21.7 |
| <i>Population Estimate¹</i> | <i>5,548</i> | <i>5,690</i> | <i>6,110</i> | <i>5,793</i> | <i>5,900</i> |

2011 TREASURE VALLEY CRIME RATES²



Law enforcement agencies in Idaho report crime within their jurisdictions to the Idaho State Police under the National Incident-Based Reporting System which has standard definitions, rules and guidelines for reporting specific crimes in three categories:

- Person Crimes = murder, manslaughter, rape/sodomy, assault, intimidation, and kidnapping
- Property Crimes = robbery, burglary, larceny/theft, arson, destruction of property, counterfeiting, fraud, embezzlement, blackmail and stolen property
- Society Crimes = drugs/narcotics, gambling, pornography, prostitution, and weapons law violations

This program provides reliable statistics for law enforcement agencies and informs the public about the nature of crimes committed in Idaho.

¹ Source: 1990-2012 Population Estimates by City Limit Boundaries, Community Planning Association of Southwest Idaho (COMPASS) at <http://www.compassidaho.org/prodserv/demo-current.htm>

² Crime rates are calculated from 2011 COMPASS population estimates and number of offenses reported in Crime in Idaho 2011, Uniform Crime Reporting Section, Idaho State Police at <http://www.isp.idaho.gov/identification/ucr/crimeinidaho2011.html>



You don't have to look any further than the calls for service to see that people in Star watch out for each other. The most common requests for help came from citizens reporting a lost dog, alerting deputies to a suspicious vehicle or asking officers to check on someone.

CITIZEN CALLS FOR SERVICE



TOP CALLS FOR SERVICE 2011 # OF CALLS

| | |
|-------------------------------|----|
| Dog Problem | 61 |
| Citizen Assist | 59 |
| Welfare Check | 50 |
| Loose, Dead or Injured Animal | 40 |
| Suspicious Vehicle | 40 |
| Burglary Alarm | 37 |
| Suspicious Subject | 31 |
| Property Check | 28 |
| 911 Hang-up Check | 27 |
| Noise Complaint | 26 |

CITY OF STAR

On average, Star deputies took 3 minutes 14 seconds to respond to high-priority emergency calls.

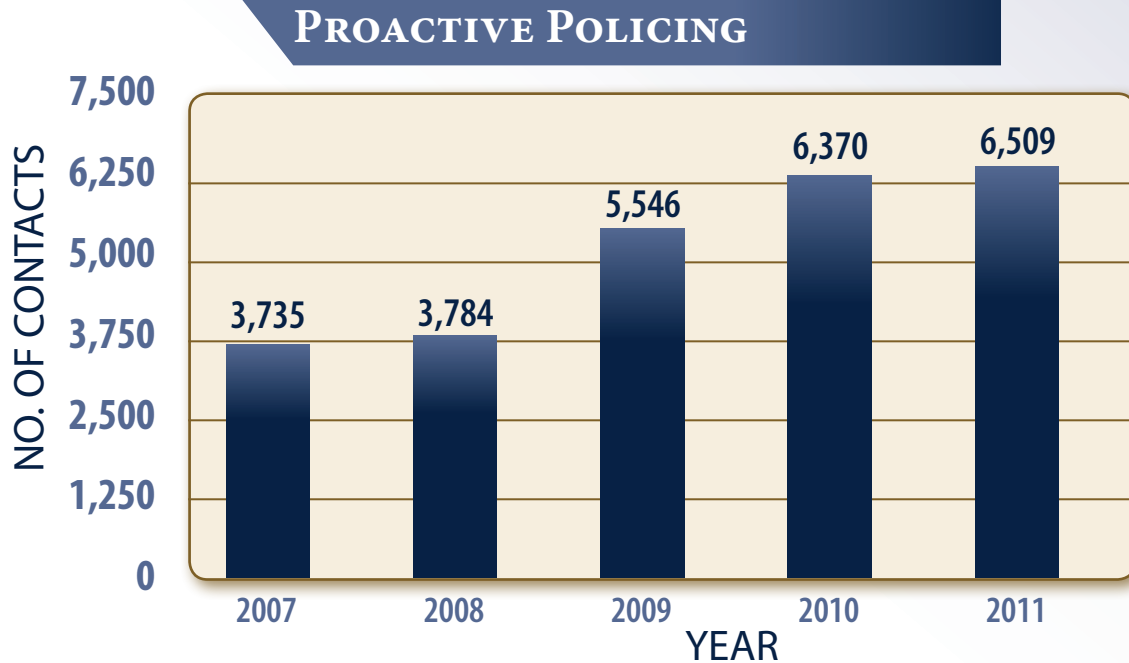
POLICE



CITY OF STAR POLICE

Traffic enforcement involves more than just stopping a speeding vehicle. It is actually an important part of proactive policing aimed at making our communities safer by changing dangerous behavior behind the wheel. Information gathered during a traffic stop can also lead deputies to bigger issues like drunk driving and drug trafficking.

Traffic enforcement in the City of Star is focused on reducing aggressive or reckless driving with patrols often conducted on Highway 44. Star deputy Ian Hale always keeps an eye out for drivers under the influence of drugs or alcohol. He has one of the highest DUI arrest rates of all deputies at the Ada County Sheriff’s Office, arresting more than 5x as many impaired drivers as other deputies.

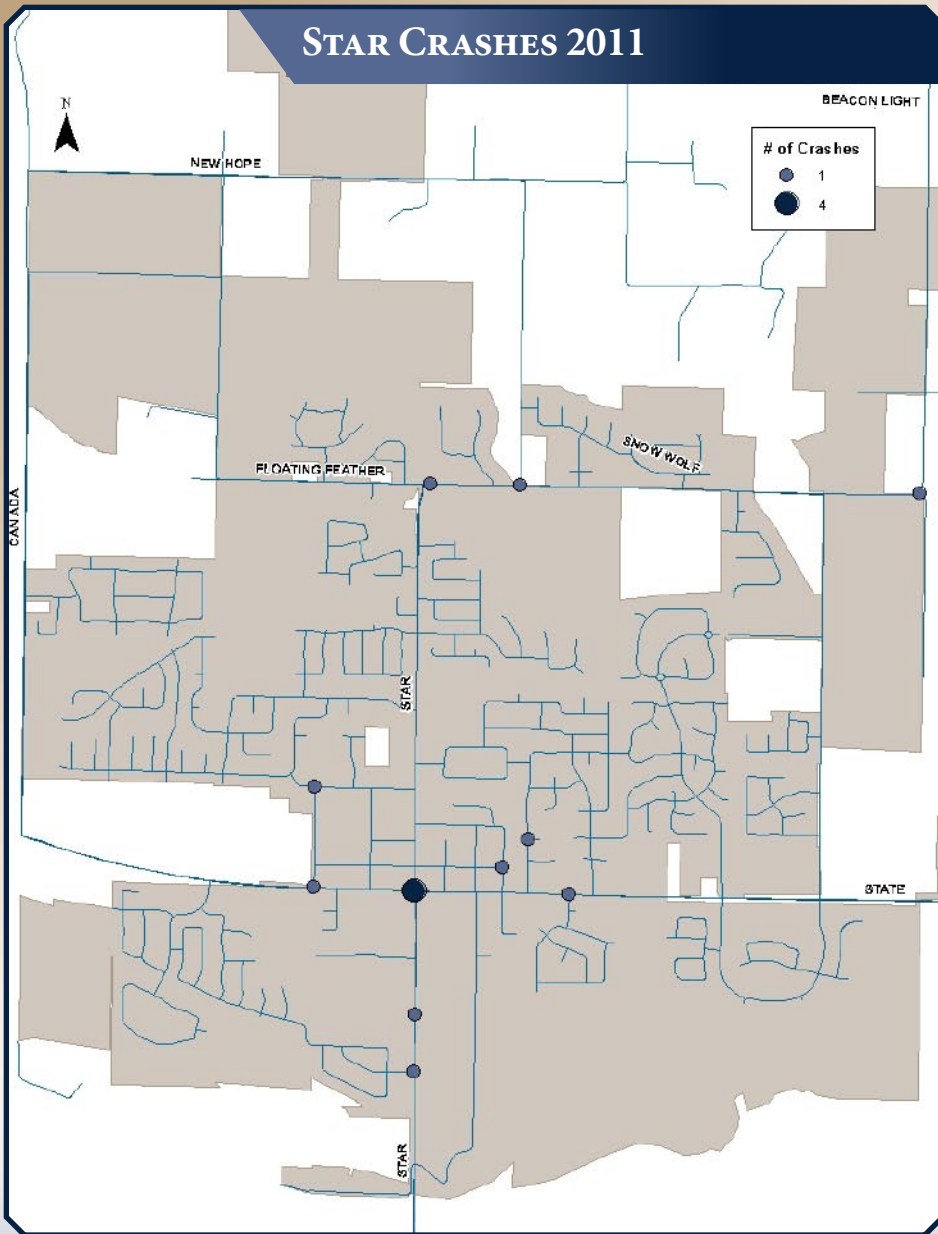


COMMON PROACTIVE POLICING ACTIVITIES 2011

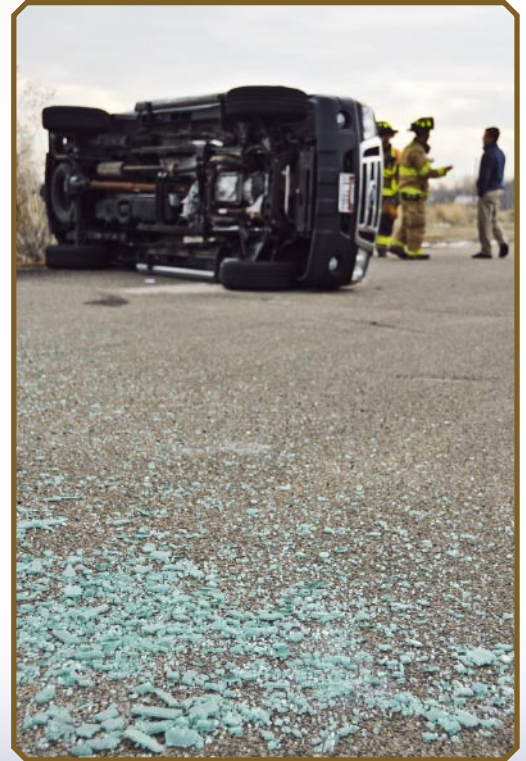
OF CONTACTS

| | |
|------------------------------------|-------|
| Security Check | 2,431 |
| Traffic Stop | 2,128 |
| Directed Patrol/Community Policing | 796 |
| Extra Patrol | 293 |
| Suspicious Subject/Vehicle Check | 127 |
| Citizen Assist or Stop | 122 |
| Subject on Foot | 67 |
| Check for Wanted Subject | 56 |





There were 14 traffic crashes in Star in 2011 - 33% fewer than the previous year. Many happened between 3-6 p.m. during the afternoon commute from school and work. Although more traffic can increase the likelihood of a crash, driver inattention played a significant role in many of Star's collisions.



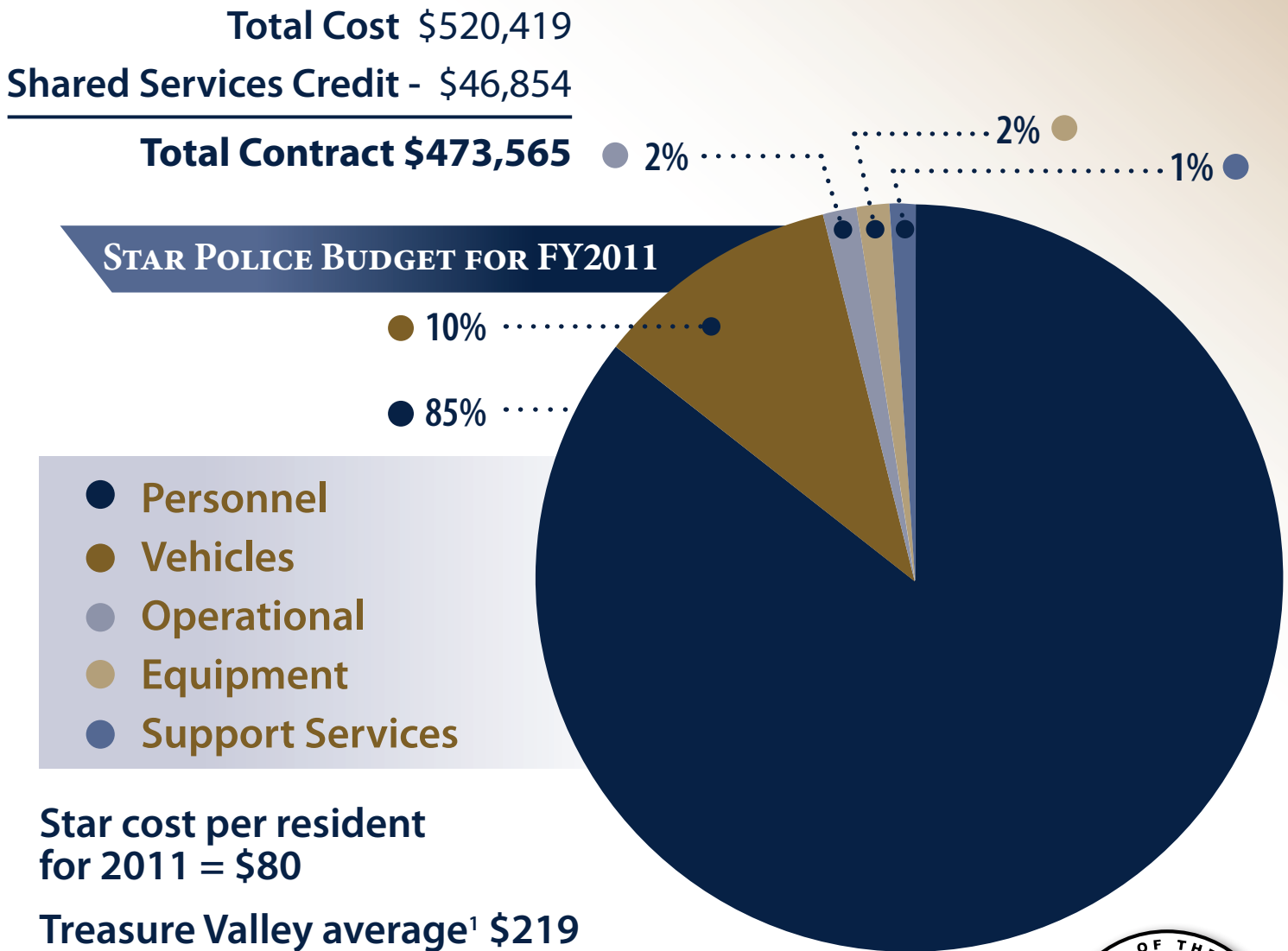
Nearly 100 people joined Star Mayor Nate Mitchell and councilmembers at an open house to honor Sgt. Ken Ramage's 8 years of dedicated service as Chief of Police in the City of Star. A few shared funny stories about Ken during his time there, but the most memorable comments came from Ken himself. As the very first ACSO deputy assigned to Star in 2003, Chief Ramage had formed a strong bond with members of the Star City Council and people living in the community. Ken thanked the citizens of Star for welcoming him and making his tenure there so rewarding. He says, with a smile, that he was always "at home" in Star.



Contract policing is a cost-effective way for the City of Star to have a reliable, well-trained and independent police force at the lowest possible cost to taxpayers. Law enforcement services cost \$80 per resident in Star, compared to more than \$200 paid per person in other Treasure Valley communities.¹

Star Police operated on \$473,565 from October 2010 to September 2011 with 85% of that going to deputies' salaries and benefits. The remainder went to vehicles, equipment and operational costs like utility fees, training and technology. In addition to paid contract services, the Ada County Sheriff's Office investigates all crimes reported in Star and provides crime scene investigation and lab services; specialized K-9, SWAT and narcotics response teams; records management services; and human resources to recruit the best deputies and ensure they are properly trained. The ACSO also provides financial services for purchasing and budgeting along with law enforcement planning beyond the crime analysis services included in the budget.

The contract with the ACSO also includes a "Shared Services Credit" that encourages Star Police and deputies working in areas near Star to respond to calls for service in each other's jurisdiction if they are the closest unit. This creates quicker response times and allows for immediate back-up during emergency calls.



¹ Based on the average cost per resident for Garden City, Boise, Meridian, Nampa, and Caldwell calculated from FY10-11 proposed police budgets and 2011 COMPASS population estimates.





CITY OF STAR POLICE

10769 W State Street
Star, ID 83669
Dispatch: 377-6790



www.adasheriff.org/AboutUs/CityofStarPolice.aspx