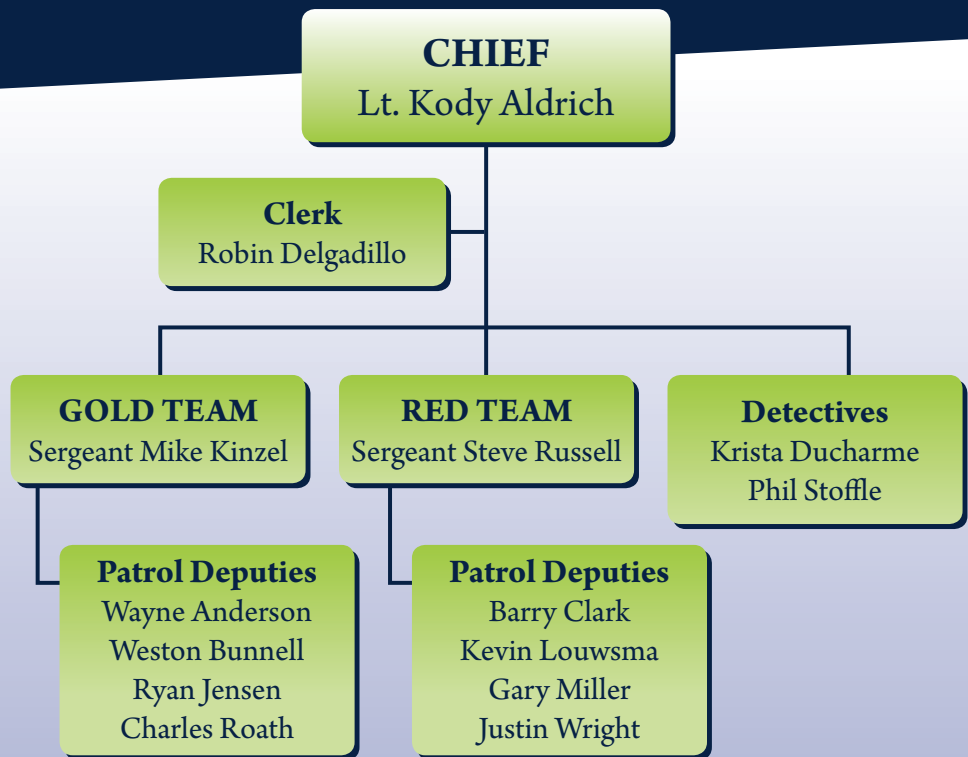


CITY OF KUNA
POLICE



working proudly with
**ADA COUNTY
SHERIFF'S OFFICE**
The Law Enforcement Agency of Choice

2009
ANNUAL REPORT



Making safer places for you to live, work and play.



Lieutenant Kody Aldrich was named Kuna's Police Chief in January of 2007, nine years after joining the Ada County Sheriff's Office where he has served many roles. Aldrich has worked as a jail detention deputy, patrol deputy, agency instructor, jail sergeant and patrol sergeant.



"People have high expectations of law enforcement. They want familiar faces protecting their community. They expect those officers to care about the public and to have the ability and resources to help people when they need it.

Through contract policing with the Ada County Sheriff's Office, Kuna City is able to provide its citizens with highly-trained, compassionate deputies dedicated to the community they serve while also getting all of the tactical, investigative and administrative support functions of Idaho's largest law enforcement agency."

- SHERIFF GARY RANEY



KUNA CITY POLICE
2009 Annual Report

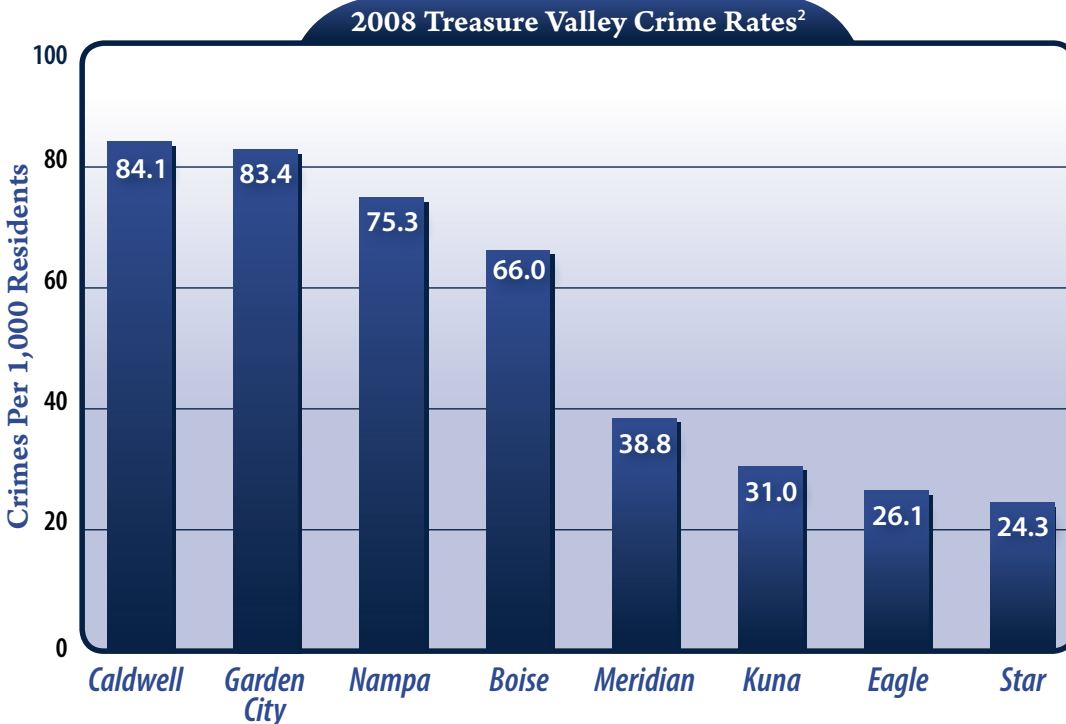
Over the past 5 years, Kuna has experienced a 36% drop in crime, even as population grew by 50%. The biggest change has been a decrease in property crimes over the past two years.

In spring 2008, we surveyed Kuna citizens about the top law enforcement issue in their neighborhood. More than half (52%) reported property crimes were their biggest concern.

We listened. Kuna Police stepped up security checks, targeted juvenile curfew enforcement through the summer months and increased community education.

Annual Crime Rate per 1,000 Residents

Crime Type	2005	2006	2007	2008	2009
Person	12.7	11.1	14.2	8.9	11.6
Property	26.0	22.1	25.7	15.4	14.0
Society	7.8	1.7	6.7	6.7	4.3
TOTAL	46.5	34.9	46.6	31.0	29.9
Population Estimate ¹	10,587	12,647	14,261	14,830	15,900



Law enforcement agencies in Idaho report crime within their jurisdictions to the Idaho State Police under the National Incident-Based Reporting System which has standard definitions, rules and guidelines for reporting specific crimes in three categories:

- **Person Crimes** = murder, manslaughter, rape/sodomy, assault, intimidation, and kidnapping offenses
- **Property Crimes** = robbery, burglary, larceny/theft, arson, destruction of property, counterfeiting, fraud, embezzlement, blackmail, and stolen property offenses
- **Society Crimes** = drugs/narcotics, gambling, pornography, prostitution, and weapons law violations

The purpose of the program is to provide reliable statistics for law enforcement purposes and to inform the public about the nature of crime problems in Idaho.

¹ Source: 2000-2009 Population Estimates by City Limit Boundaries, Community Planning Association of Southwest Idaho (COMPASS) at <http://www.compassidaho.org/prodserv/demo-current.htm>

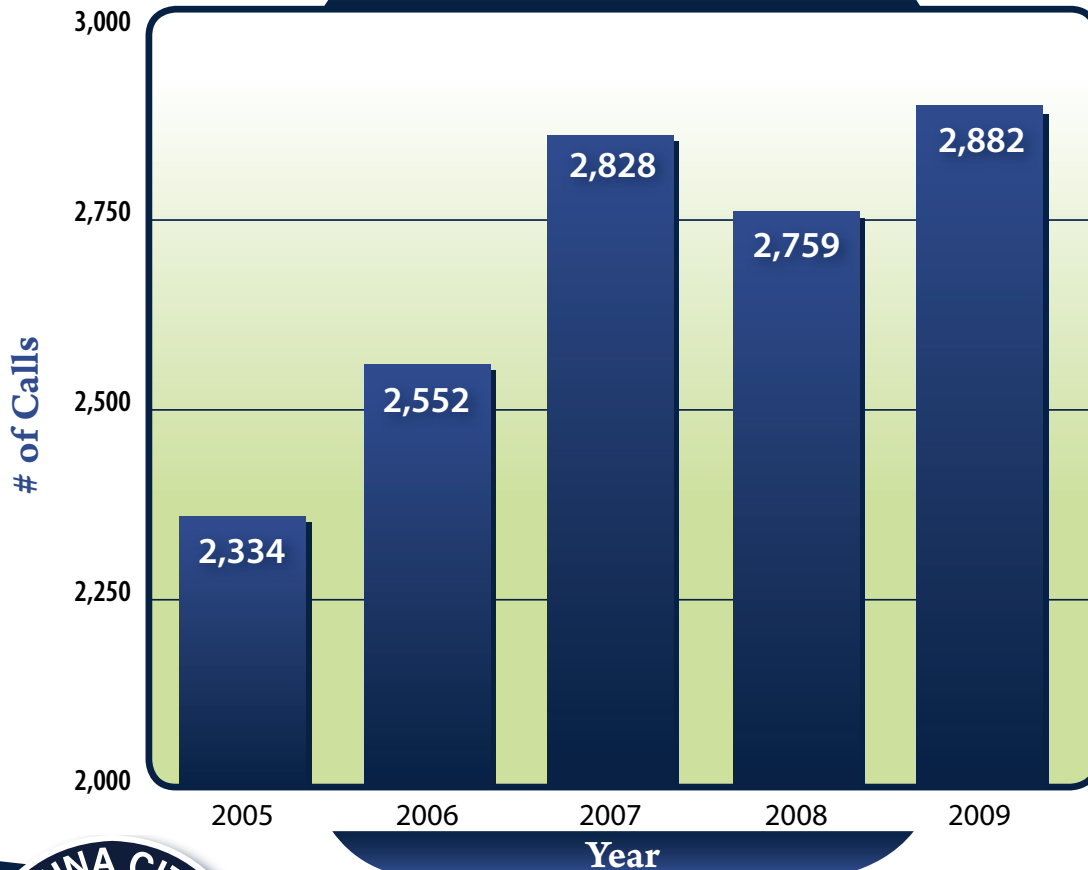
² Crime rates are calculated from the number of offenses reported in Crime in Idaho 2008 (Uniform Crime Reporting Section, Bureau of Criminal Identification, Idaho State Police at <http://www.isp.state.id.us/identification/ucr/crimeinidaho2008.html>) and 2008 population estimates from COMPASS.



Calls for Service

Our deputies responded to 2,882 calls for help from citizens of Kuna. These are calls made by residents to ACSO dispatchers. The most common calls for service were to check on someone's well-being or to report a suspicious vehicle. The average time it took deputies to respond to high-priority emergency calls was 3 minutes 14 seconds.

Citizen Calls for Service



Top Calls for Service

2009

	# of calls
Welfare Check	158
Suspicious Vehicle	112
Juvenile Problem	105
Burglary Alarm	99
Citizen Assist	80
Suspicious Subject	79
Loose/Dead/Injured Animal	70
Noise Complaint	66
911 Hang-up Check	61
Theft Report	54



KUNA CITY POLICE

2009 Annual Report

Proactive Policing

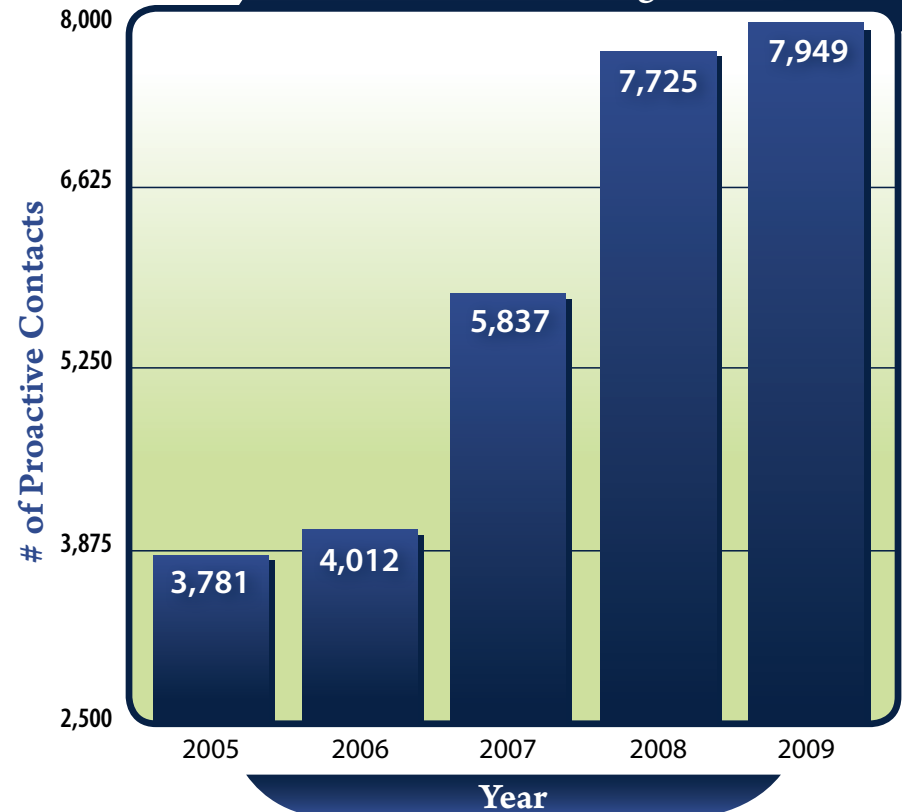
Just as important as our response to emergencies is the time your deputies spend on proactive policing - conducting traffic stops, checking local businesses or construction sites for suspicious activity and educating the community about ways to prevent crime and protect themselves. We know that when we increase security checks, the number of property crimes like vandalism and theft go down.

Common Proactive Policing Activities

2009

	<i># of contacts</i>
Traffic Stop	3,119
Security Check	2,606
Suspicious Subject/Vehicle Check	367
Directed Patrol/Community Policing	324
Abandoned Vehicle	202
Citizen Assist or Stop	134
Bar Check	133
Registered Sex Offender Check	83

Proactive Policing



Our 2008 citizen survey found 37% of Kuna residents wanted to see more patrols and an increased police presence in the community. Kuna deputies have doubled the amount of time spent on proactive policing over the past five years.

KUNA CITY POLICE
2009 Annual Report



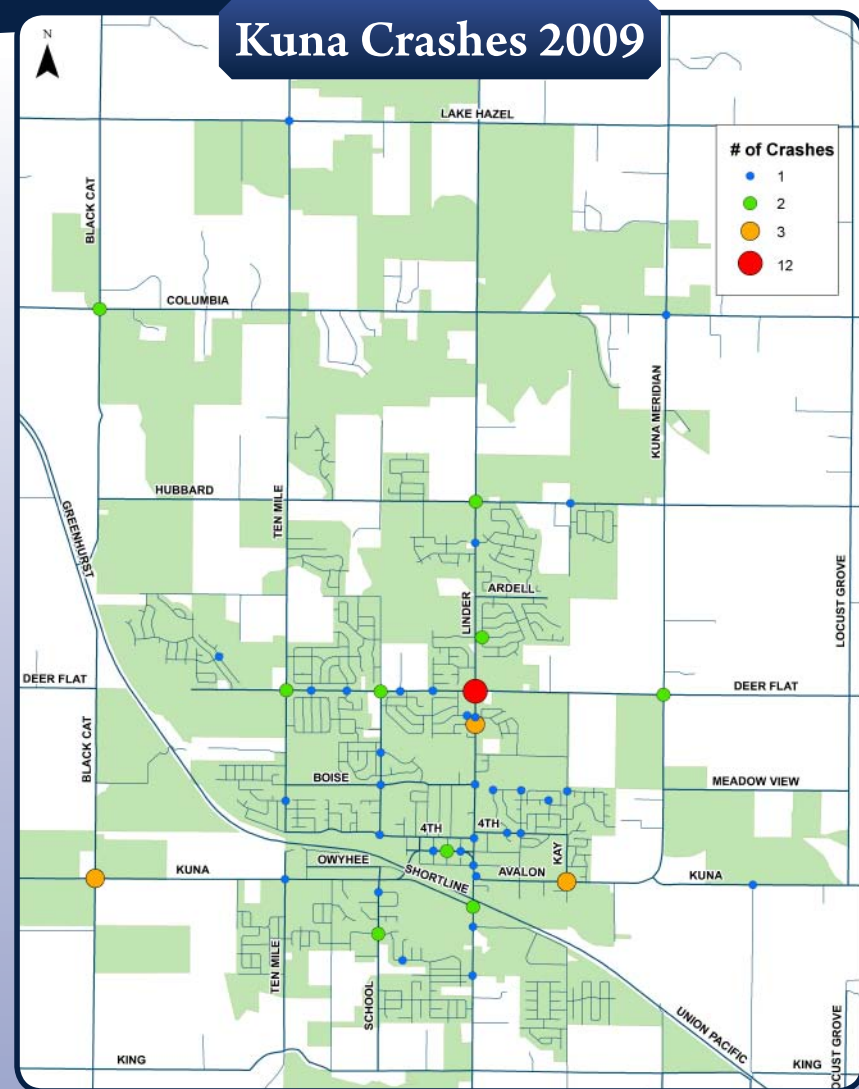


"You guys are really top-notch. My family and the families around us really appreciate your help in protecting our kids. Thank you!"

-TONY SWENSON
Kuna resident



KUNA CITY POLICE
2009 Annual Report

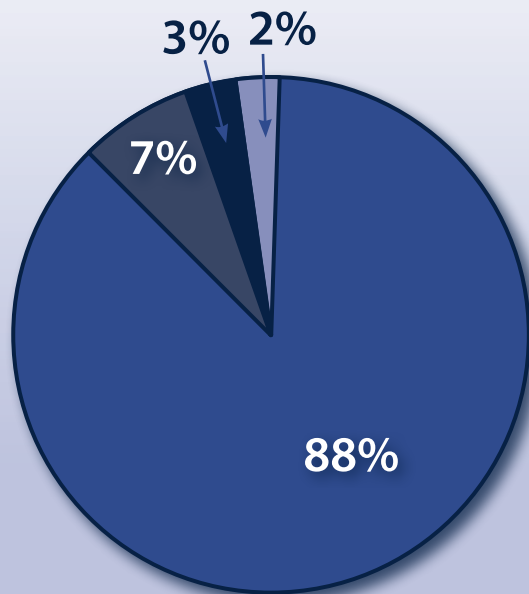


Kuna Police investigated 72 crashes in 2009. Forty-four (61%) resulted in damage to property. Twenty-seven (38%) caused injuries to people. There was also one death.

To address the increase in crashes, Kuna Police secured several grants to help pay for directed patrols focused on aggressive driving on Kuna's roads. Deputies target roads and intersections where traffic issues are a concern.

Kuna Police Budget for FY 2009

\$1,408,325 Total Cost
 - \$129,021 Shared Services Credit
\$1,279,304 Total Contract



- Personnel
- Vehicles
- Operational
- Equipment

Kuna Police operated on a budget of \$1,279,304 from October 2008 – September 2009. Nearly 88% of that money was used to staff Kuna police. The remainder went to vehicles, equipment and operational costs such as building and utility fees, training and computers.

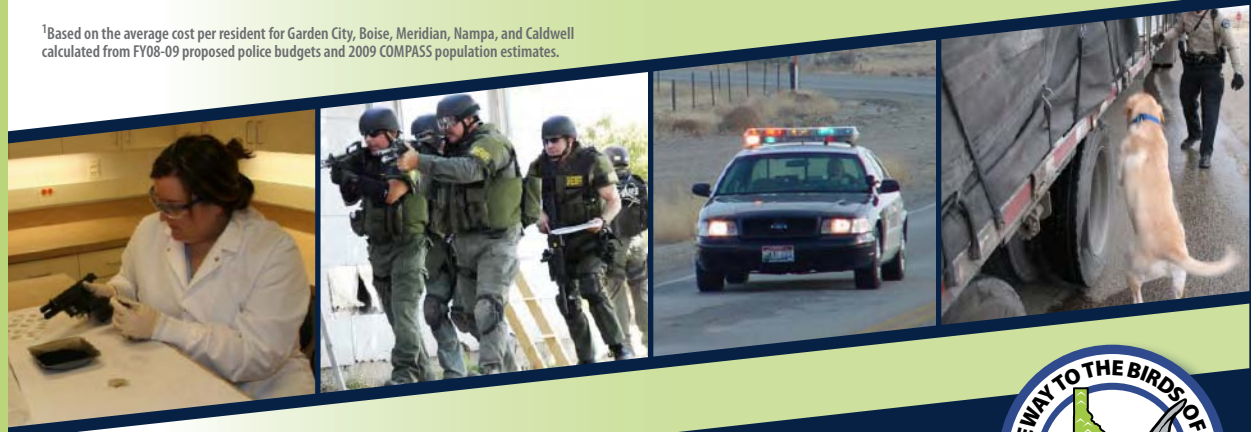


In addition to paid contract services, the Ada County Sheriff’s Office provides crime scene investigation and lab services; specialized K-9, SWAT and narcotics response teams; records management services; and human resources to recruit the best deputies and ensure they are properly trained. The ACSO also provides financial services for purchasing and budgeting along with law enforcement planning beyond the crime analysis services included in the budget.

The contract with the ACSO also includes a “Shared Services Credit” that encourages County and Kuna deputies to respond to calls for service in each other’s jurisdiction if they are the closest unit. This creates quicker response times and allows for immediate back-up during emergency calls. More than half of all Kuna crimes are investigated by ACSO detectives.

Contract policing is a cost effective way for Kuna City to have a reliable, well-trained and independent police force at the lowest possible cost to taxpayers. The cost of law enforcement was \$80 per Kuna resident in 2009, compared to nearly \$200 per year for residents of other cities in the Treasure Valley.¹

¹Based on the average cost per resident for Garden City, Boise, Meridian, Nampa, and Caldwell calculated from FY08-09 proposed police budgets and 2009 COMPASS population estimates.



CITY OF KUNA
POLICE



763 W. Avalon
Suite 115
Kuna, ID 83634

Dispatch: 377-6790

compiled by
ADA COUNTY SHERIFF'S OFFICE
The Law Enforcement Agency of Choice

www.adasheriff.org
www.adasheriff.org/About/kunaSub.asp