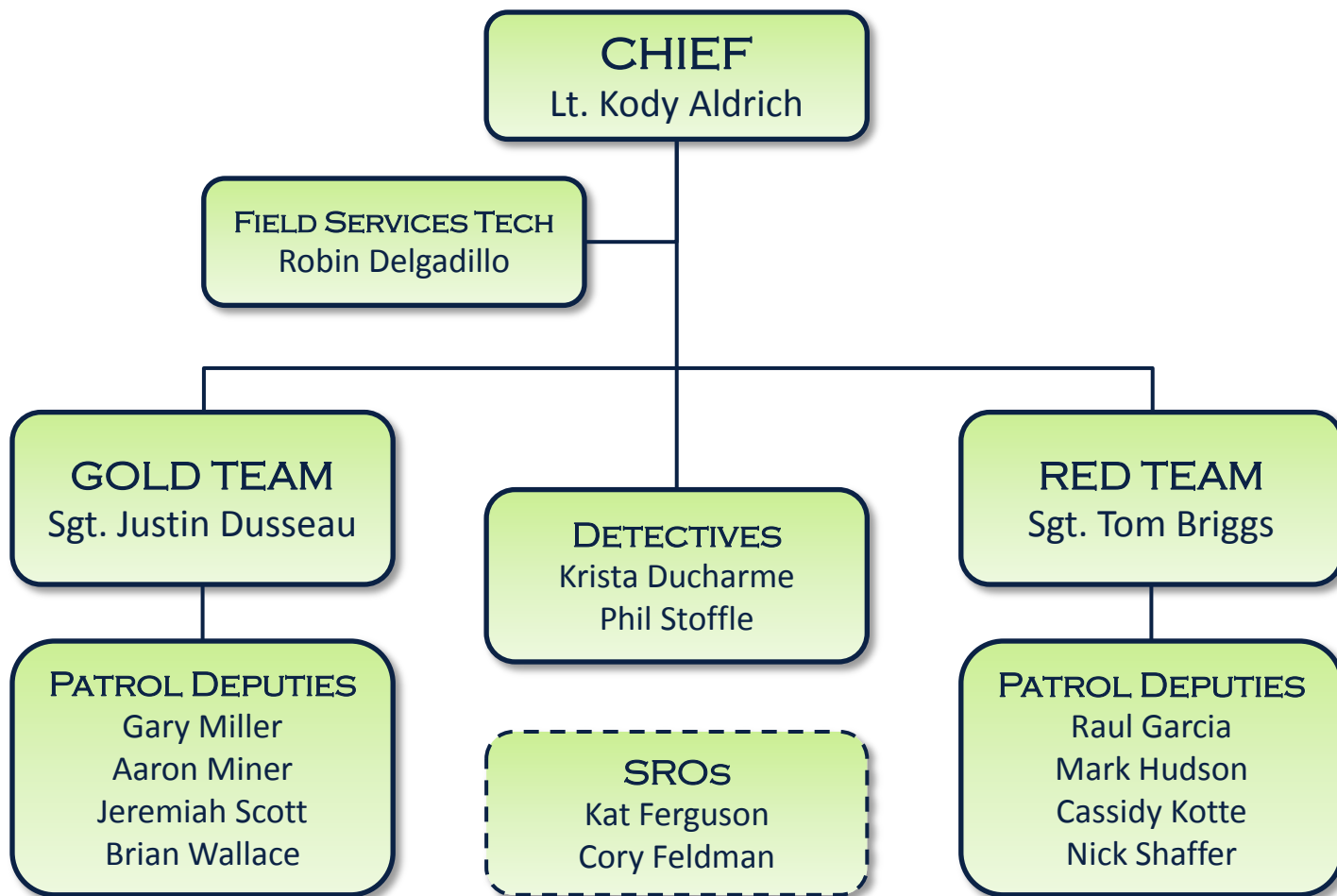


**CITY OF KUNA**  
**POLICE**



2011  
ANNUAL REVIEW



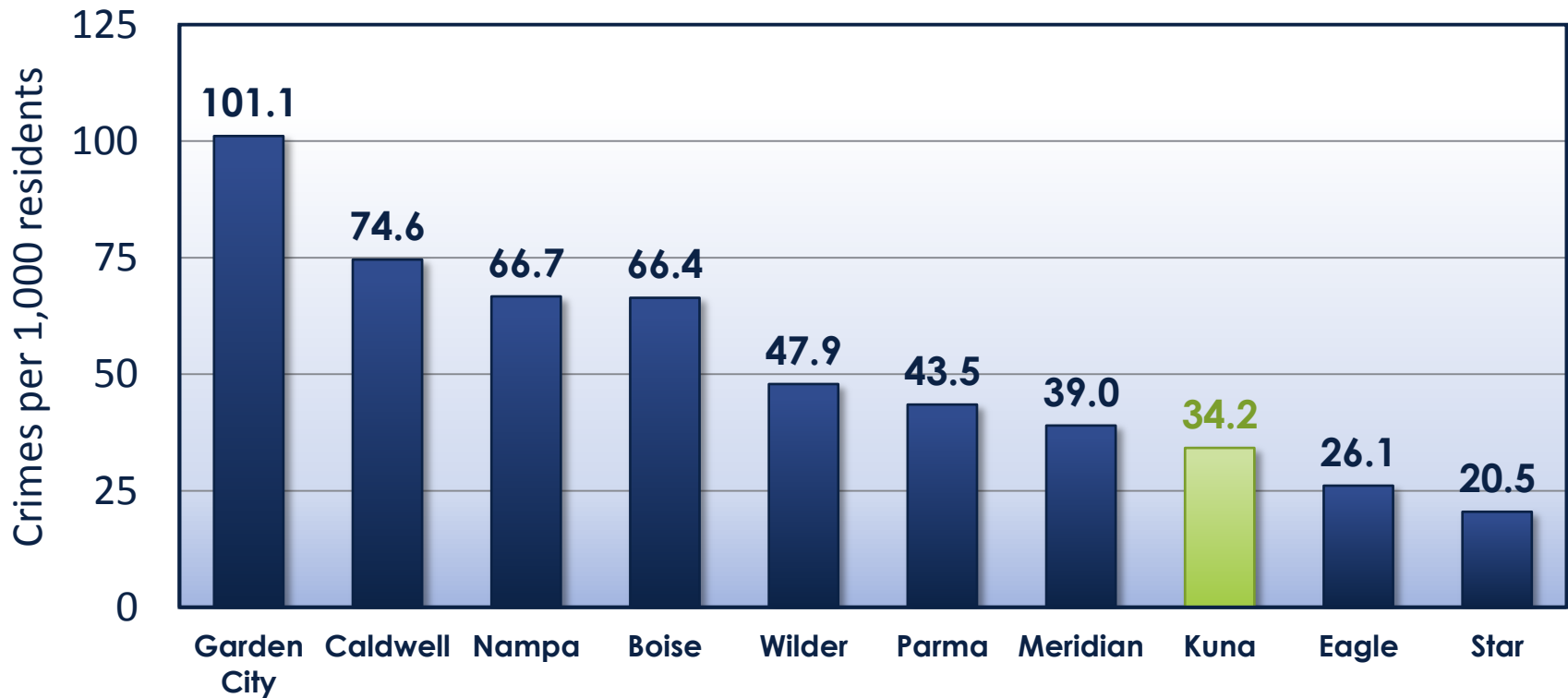
# KUNA CITY CRIME RATES

	2007	2008	2009	2010	2011*
<b>Total Crimes</b>	<b>654</b>	<b>454</b>	<b>476</b>	<b>520</b>	<b>443</b>
Person	203	132	184	190	168
Property	362	228	223	232	208
Society	89	94	69	98	67
Popn Estimate	14,261	14,830	15,900	15,210	15,470
<b>Crime Rate (per 1000 residents)</b>	<b>45.9</b>	<b>30.6</b>	<b>29.9</b>	<b>34.2</b>	<b>28.6</b>

*\*Projection based on Jan-Nov 2011*



# 2010 TREASURE VALLEY CRIME RATES



# CITIZEN CALLS FOR SERVICE

## TOP CALLS

2011

	<i># of calls</i>
Juvenile problem	198
Welfare check	159
Animal problem	125
Burglary alarm	117
Citizen assist	112
Suspicious vehicle	92
Suspicious subject	86
Locate drunk driver	71
Noise complaint	70

## NO. OF CALLS



# CODE 3 RESPONSE TIME



## CITIZEN CFS

Our deputies responded to 3,051 calls for service in 2011 and arrived on-scene in an average of 7 minutes.

Response to emergency calls was significantly faster at 3 min 12 sec.



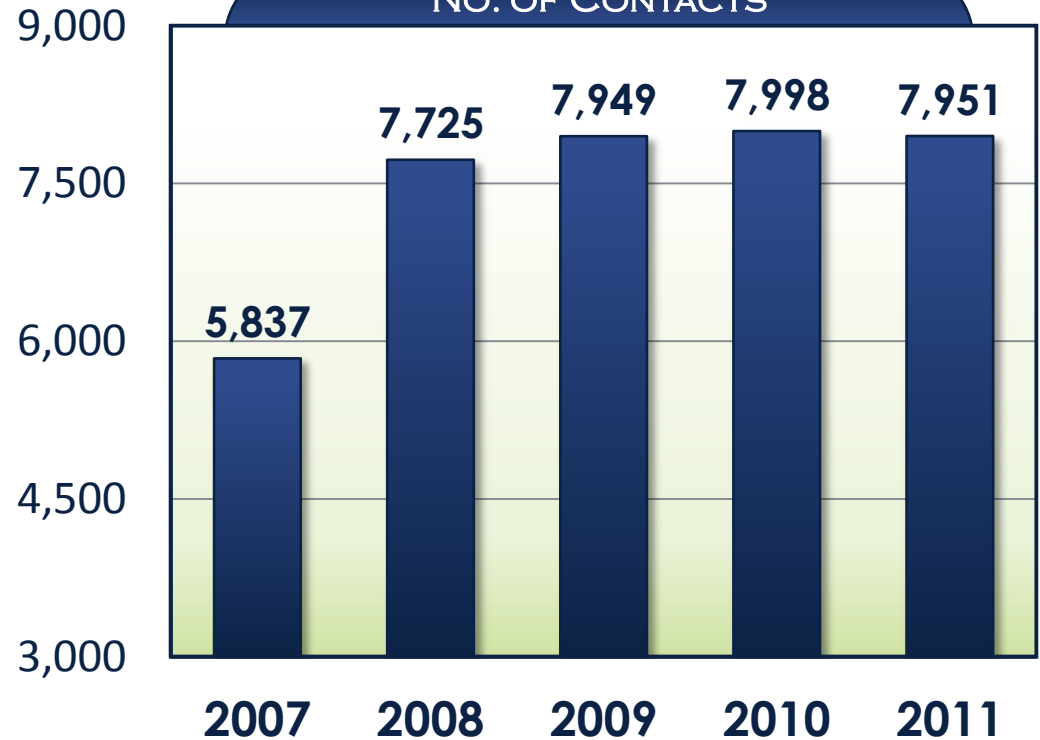
# PROACTIVE POLICING

## COMMON ACTIVITIES

2011

	<i># of contacts</i>
Security check	2,925
Traffic stop	2,681
Suspicious subject/ vehicle check	459
Directed patrol/ community policing	317
Citizen assist or stop	209
Abandoned vehicle	124
Foot patrol	105
Bar check	93

## NO. OF CONTACTS



# TRAFFIC CRASHES



**TYPE OF CRASH**

	<u>Fatal</u>	<u>Personal Injury</u>	<u>Property Damage</u>
2007	1	18	45
2008	0	15	41
2009	1	27	44
2010	0	18	46
2011*	0 <sup>†</sup>	14	44

*\*Projection based on Jan-Nov 2011*

*†A fatal crash that occurred at King & Swan Falls was investigated by ISP*



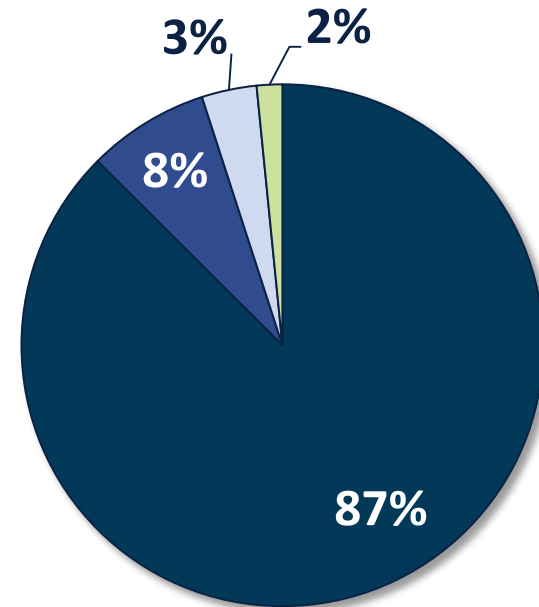


# KUNA POLICE BUDGET FY2012

## KUNA POLICE BUDGET

FY12

\$ 1,423,207	Total Cost
<u>- 144,875</u>	Shared Services Credit
<b>\$ 1,278,332</b>	<b>Total Contract</b>



- Personnel
- Vehicles
- Operational
- Equipment

Kuna residents pay **\$83** per year for police services → 87% is used to pay deputies

~ other Treasure Valley residents pay nearly \$200 each year for police services\* ~



*\*Based on the average cost per resident for Garden City, Boise, Meridian, Nampa and Caldwell calculated from FY10 police budgets and U.S. Census population estimates.*

**CITY OF KUNA**  
**POLICE**



**KUNA CITY POLICE**

1450 Boise St  
Kuna, ID 83634

Office: 577-3860 • Dispatch: 377-6790

