



# Ada County Sheriff's Office Jail Medical Unit

## Project Description

In accordance with a Jail Facility 20 Year Master Plan, the Ada County Jail underwent an expansion in 2004 to add approximately 300 beds to the facility, bringing the total inmate capacity to 1144.

The next phase of the plan involves expanding the jail medical facility to better serve the increasing inmate population. A new 81 bed medical facility, including examination rooms and medical support area, will enable the Ada County Jail to enhance medical, mental health, and drug and alcohol detoxification services.

## Project Highlights

<b>Project Location:</b>	<b>Ada County Jail 7210 Barrister Boise, ID</b>
<b>Design Architect:</b>	<b>CSHQA</b>
<b>Owner's Representative / Commissioning Agent:</b>	<b>CH2M HILL</b>
<b>General Contractor:</b>	<b>Layton Construction</b>
<b>Project Budget:</b>	<b>\$5.8 million</b>

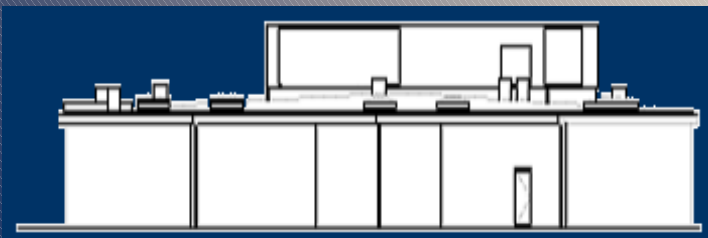
## Project Benefits

- Maintain State and National certification
- Expand the jail's drug, alcohol and mental health treatment facilities and programs
- Help to keep the taxpayer's costs related to inmate medical treatment down
- Reduction of the county's liability associated with inmate medical service
- Avoid crowding in the jail and provide sufficient number of medical beds to inmates

## Project Elevations



East Elevation



South Elevation

