

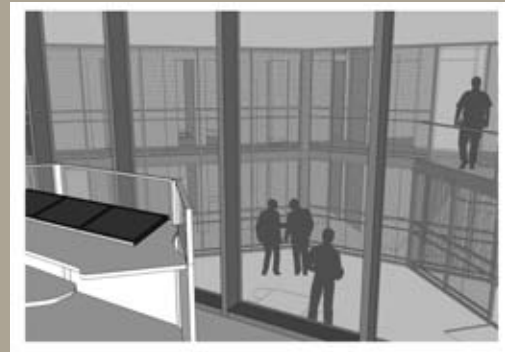


ADA COUNTY JAIL POD D

OVERVIEW

The Ada County Jail first opened in 1977 as part of the Ada County-Boise City Public Safety Building. It was originally designed to house 160 inmates and 32 work release prisoners. It's been expanded several times over the years resulting in an inmate capacity in 2012 of 1,144. Pod D will provide a new 88-bed maximum security unit and be constructed in an existing recreation yard area.

All inmates are classified using a specific system which is basically a risk assessment. Housing inmates by classification greatly increases the security of other inmates and jail staff. To classify an inmate, officers research the inmate's past and criminal history and their past and present behavior when in custody. Mental or physical disabilities are also considered to determine appropriate housing.



HIGHLIGHTS

Location: 7200 Barrister Rd.
Boise, Idaho

Facility: 14,000 sq. ft. Pod D

Architect: Lombard Conrad Architects

General Contractor: Scott Hedrick Construction, Inc.

Completion: June 2013

Project Cost: \$4.3 Million

INFO CONTACT

Ada County Operations
Dave Logan, Director
Bruce Krisko, Construction Manager
Telephone: (208) 287-7100
Email: bkrisko@adaweb.net

Ada County Sheriff's Office
Telephone: (208) 577-3000
www.adasheriff.org

MAIN FEATURES

- 88-Bed Maximum-Security Unit
- 3 Day Rooms
- 2 Outdoor Exercise Areas

PROJECT BENEFITS

- New housing for the more violent offenders
- Reduced risk to inmates and staff by keeping violent offenders away from the general population
- Increased effectiveness of the behavioral housing plan

