

ADA COUNTY ENVIRONMENTAL ADVISORY BOARD

November 17, 2015



PROCESS OVERVIEW

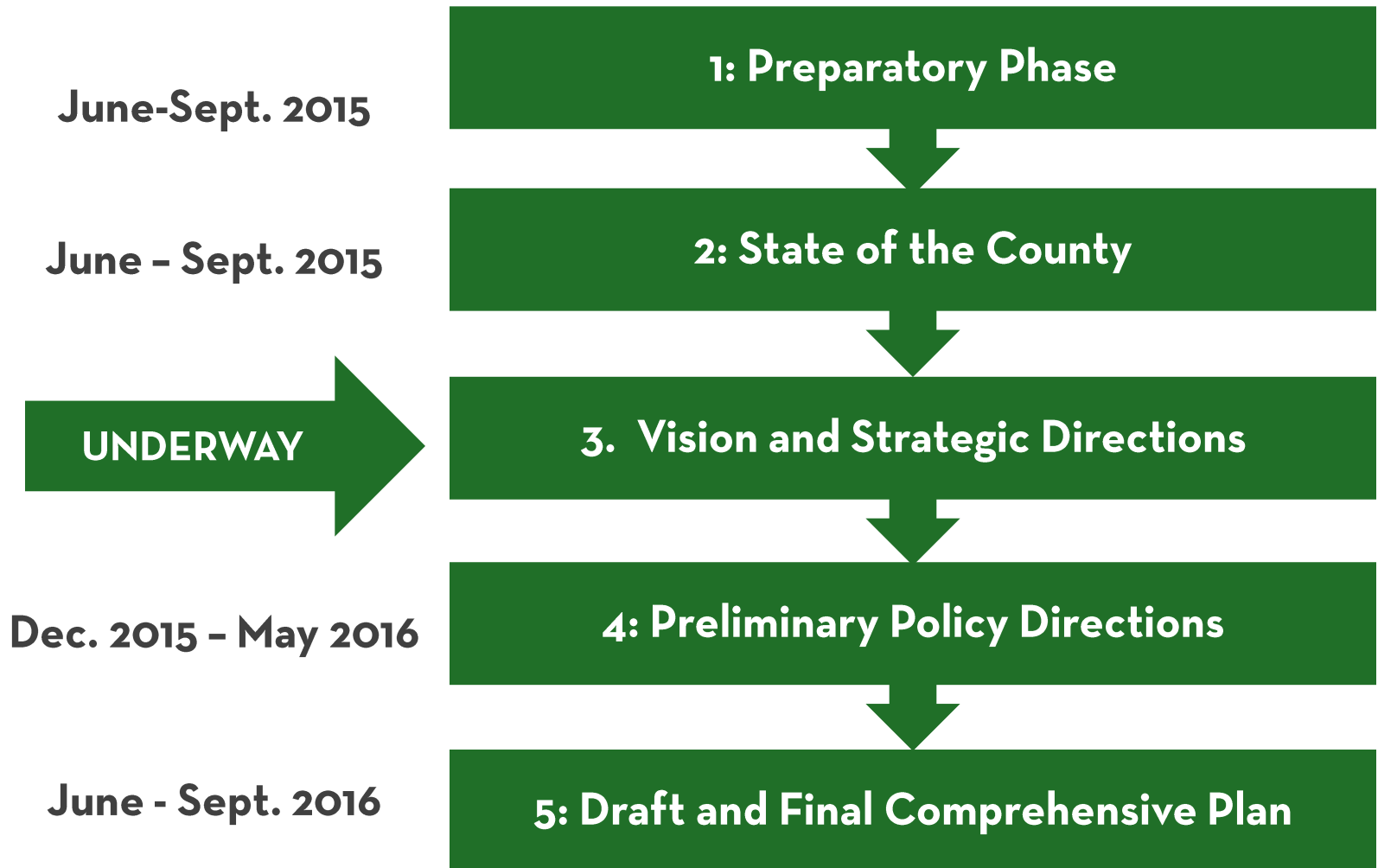
WHAT IS ADA COUNTY 2025?



Joint Planning Process

- **Comprehensive Plan Update**
 - Long-range plan
 - Last updated in 2007
 - Policy guide for the growth and physical development of the County
- **Strategic Business Plan**
 - Vision for countywide service delivery and business decisions within the County organization
 - Key initiatives to support its implementation

Process Overview

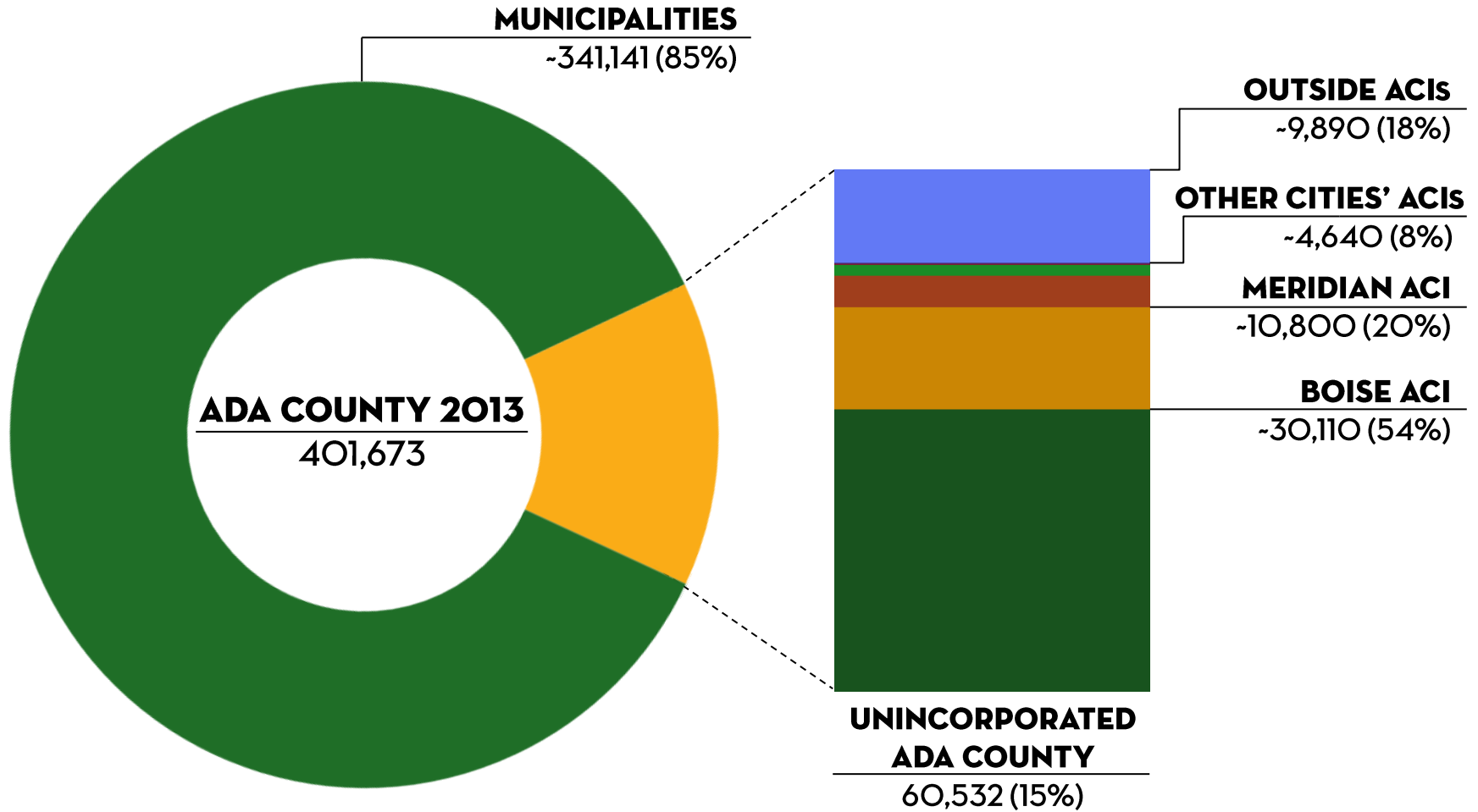


STATE OF THE COUNTY:

TRENDS AND FORCES



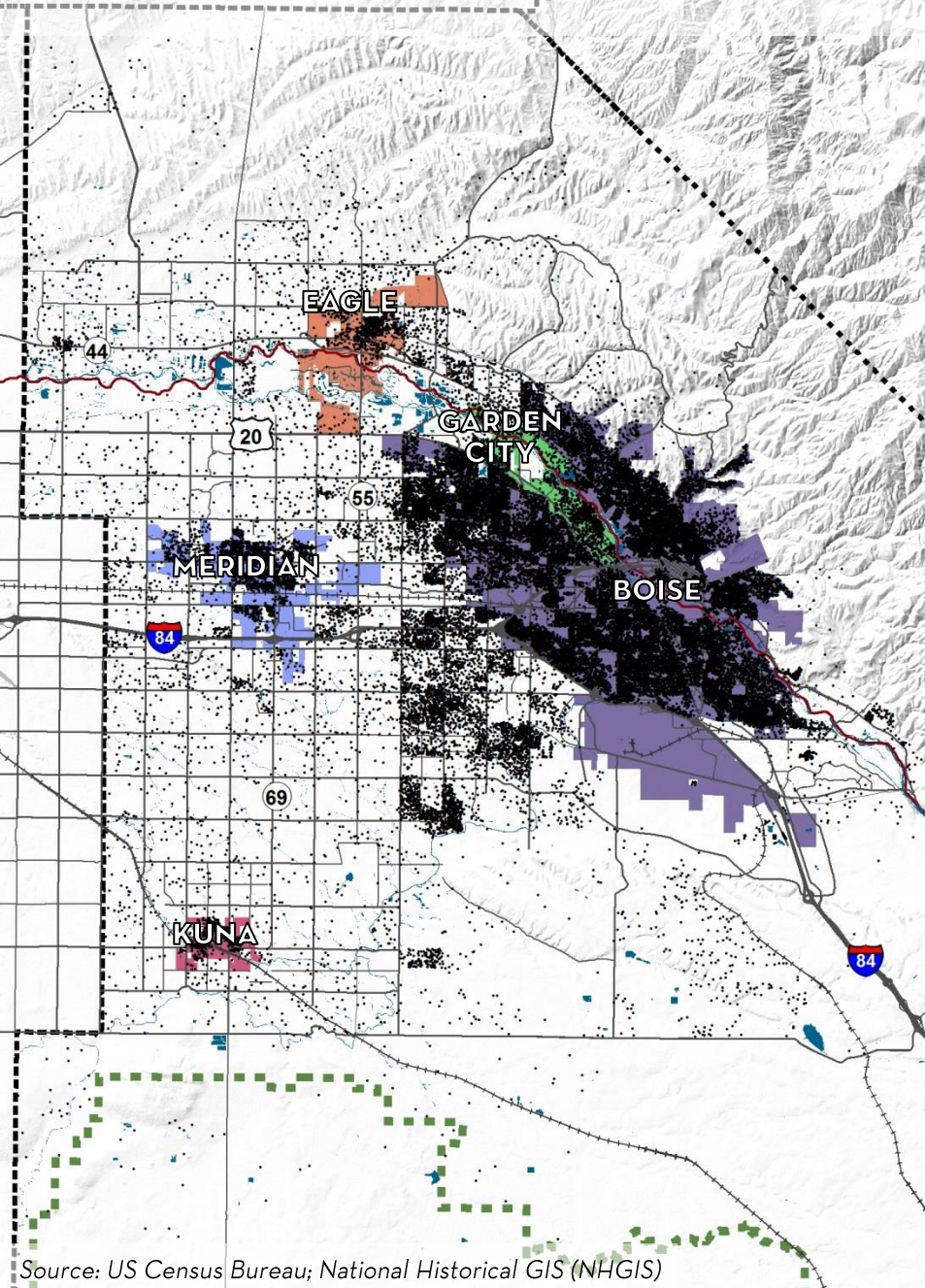
Where We Live in Ada County



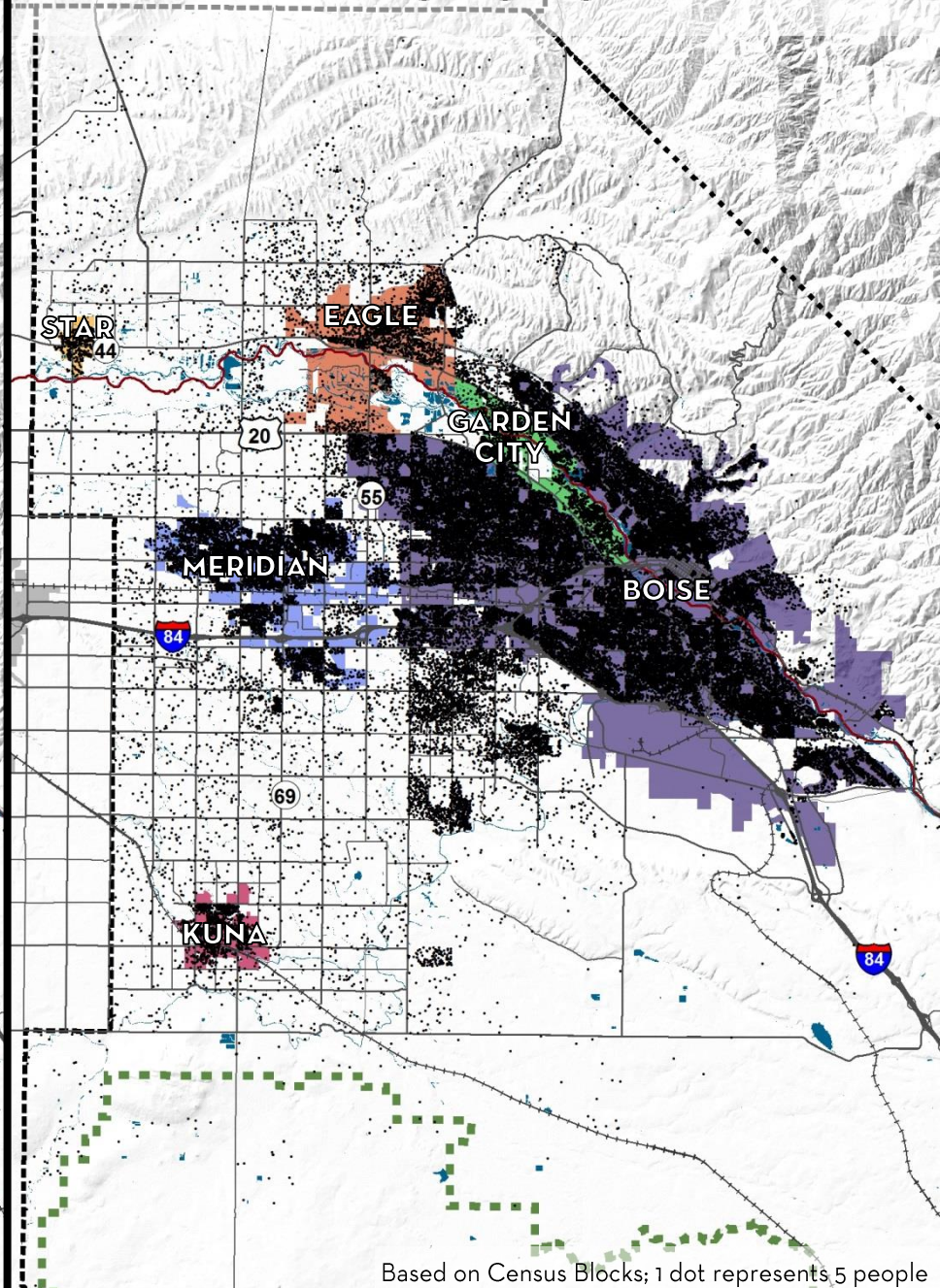
Note: ACI figures are based on TAZ boundaries and do not align exactly with municipal and ACI boundaries

Source: US Census Bureau; COMPASS

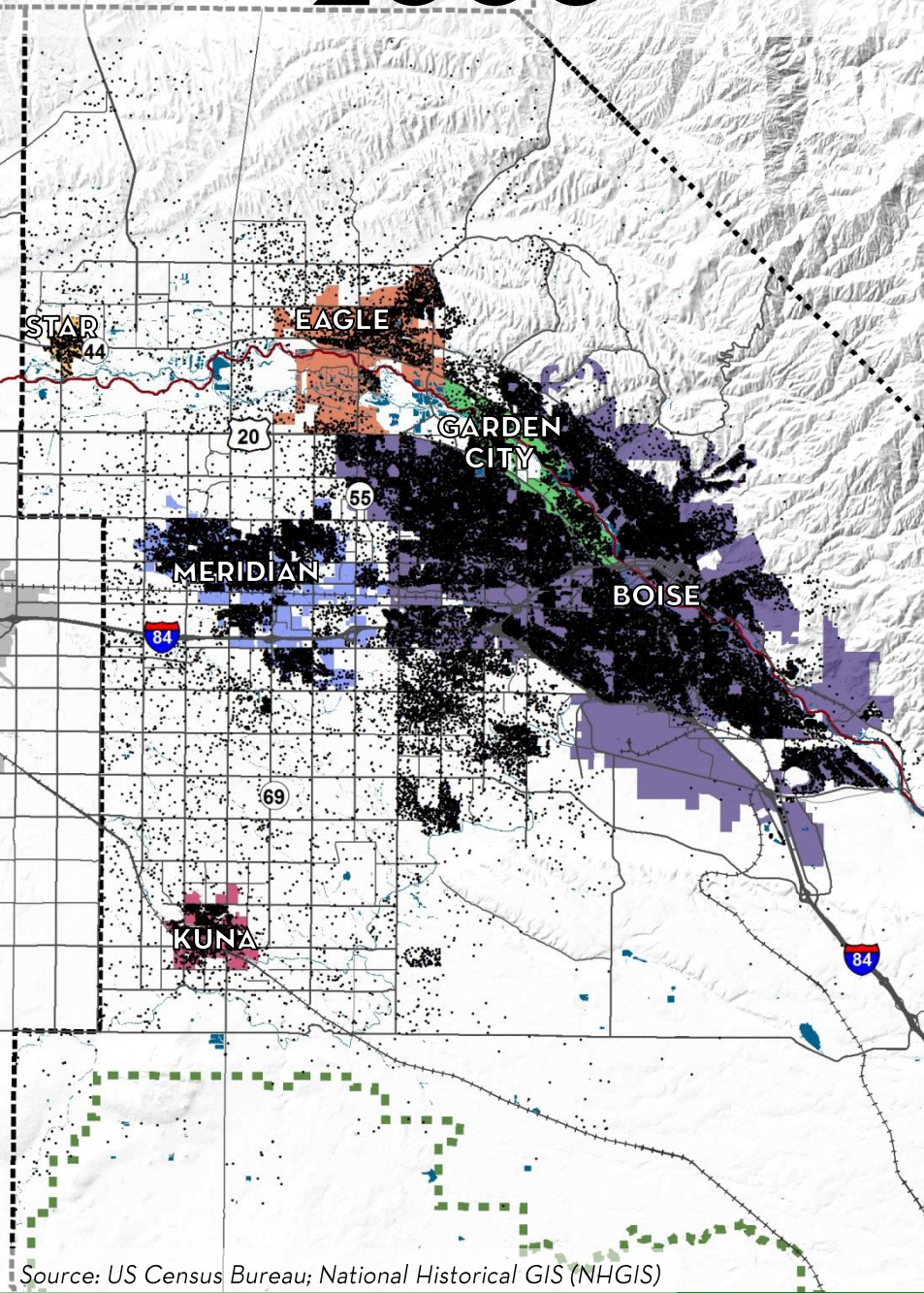
1990



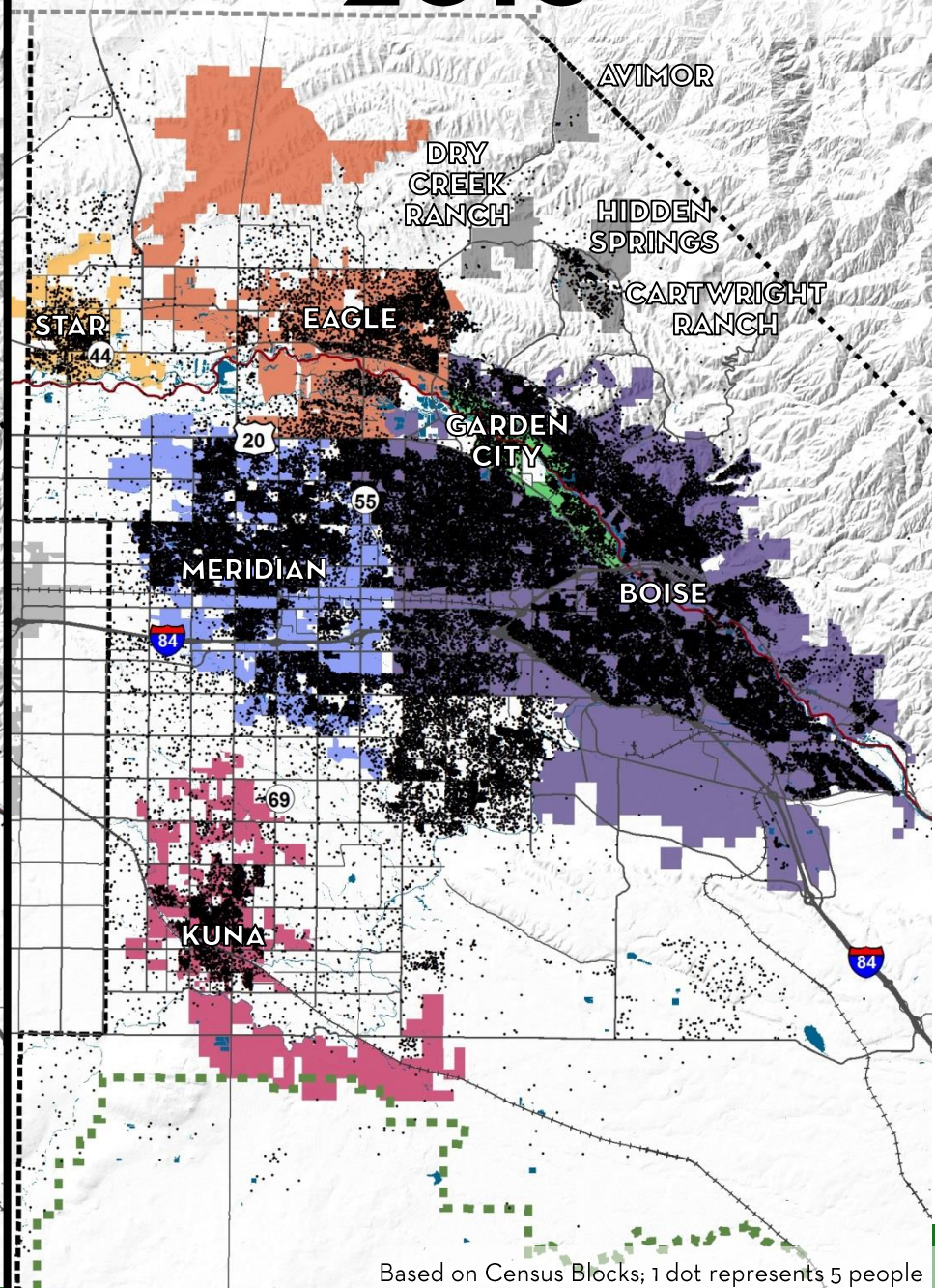
2000



2000



2010



Source: US Census Bureau; National Historical GIS (NHGIS)

Based on Census Blocks; 1 dot represents 5 people

Population - Growth

- Projected to reach 674,317 by 2040
 - Represents an increase of over 282,000 new residents countywide
 - Approximately 60,532 of which would be located in unincorporated areas of Ada County.

KEY FACTS

401,673

Ada County Population (2013)

Boise

Ada County's largest city

15%

Pop. living outside a municipality (2013)

3%

Annual average rate of pop. growth (1980-2013)

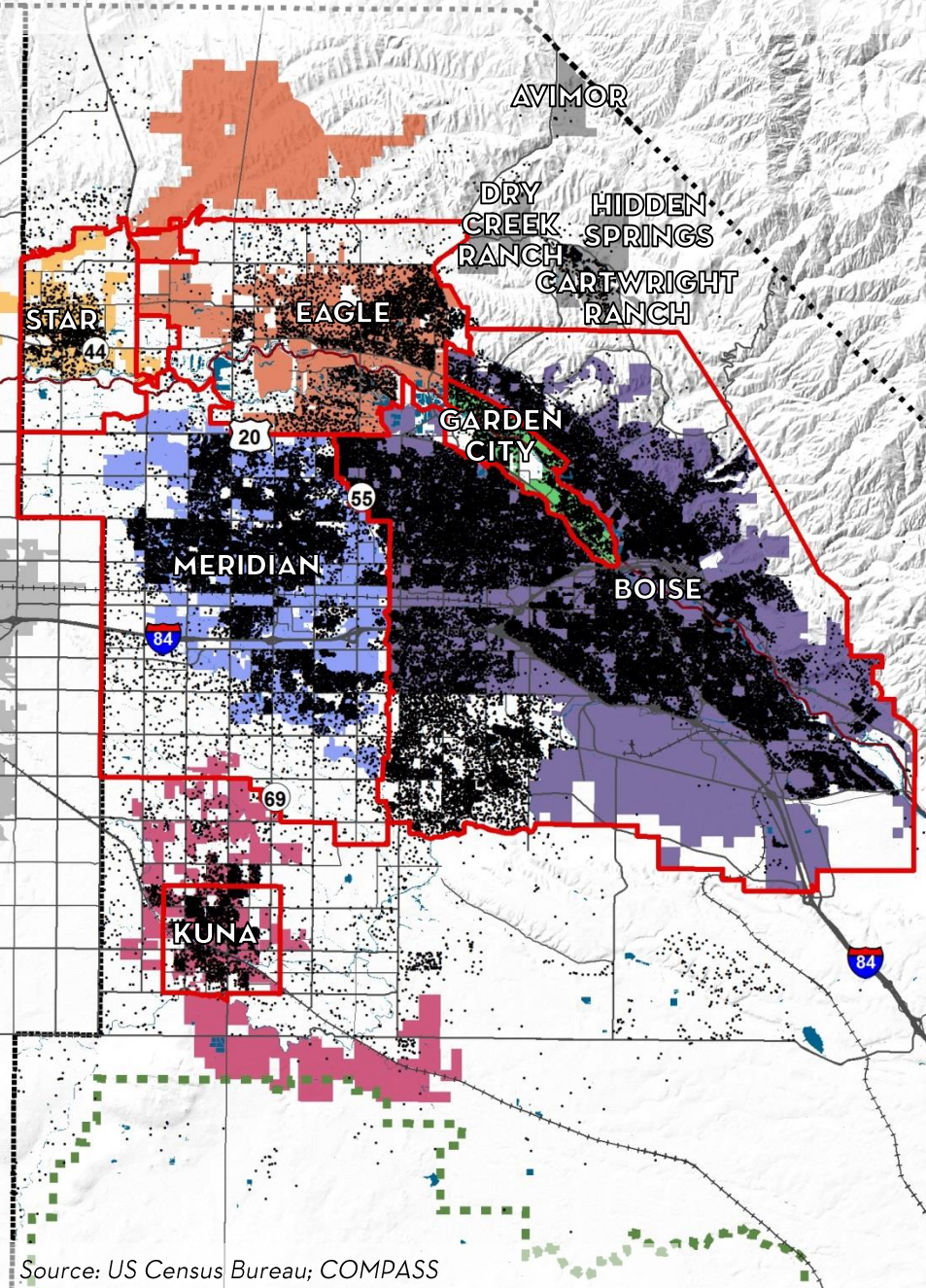
Boise

City with largest population growth (1980-2013)

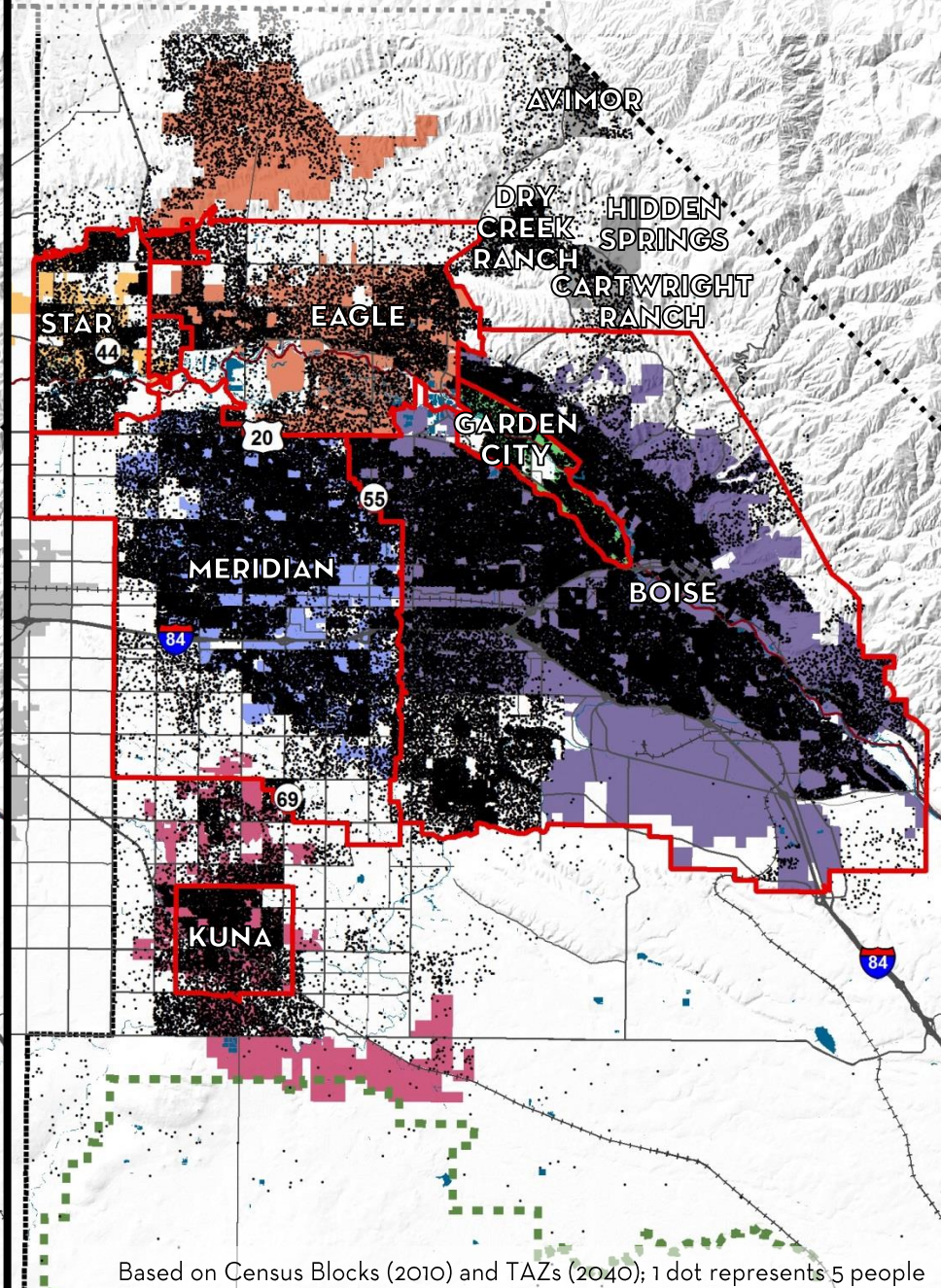
Meridian

City with fastest population growth (1980-2013)

2010



2040



Population - Age

- Older age groups account for an increasing share of Ada County's population
- Demographics vary across the six municipalities and unincorporated areas of Ada County

KEY FACTS

35.4 years

Ada County median age (2013)

Garden City

City with oldest residents
(median: 43 years)

Kuna

City with youngest residents
(median: 28.9 years)

25-34 years

Ada County's largest age cohort

21%

Millennials in Ada County

4.6%

Annual rate of change in
population age 65+, 2000-2013

Housing

- Housing stock predominantly single-family
- Less than 1 in 3 households rented their home in 2013
- Median housing values have risen since 2000
- 1 in 3 households spent more than 30% of income on housing in 2013

KEY FACTS

43,573

Housing units built since 2000

57%

County's housing units located
in Boise

75%

Single-family units

\$183,600

Median home value (2013)

\$833

Median gross monthly rent
(2013)

Economy

- Number of jobs in Ada County back to pre-recession level; unemployment is still higher than 2007 low
- Strongest industries:
 - Education and health services
 - Trade, utilities, and transportation
- Increases in incomes and wages have not kept pace with inflation since 2000

KEY FACTS

St. Luke's Health System

Largest employer in Ada County

4.1%

Ada County unemployment rate (2014)

85%

Ada County residents who also work in Ada County

\$55,210

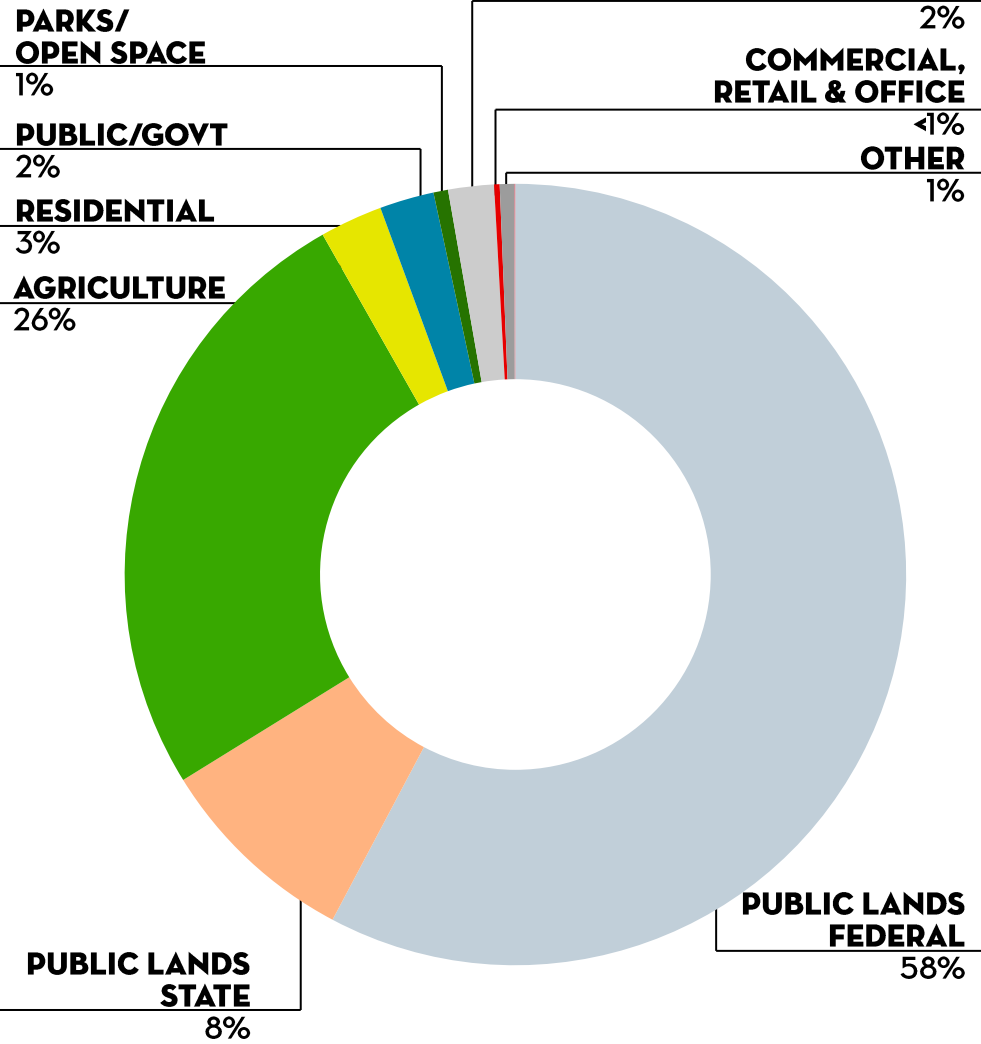
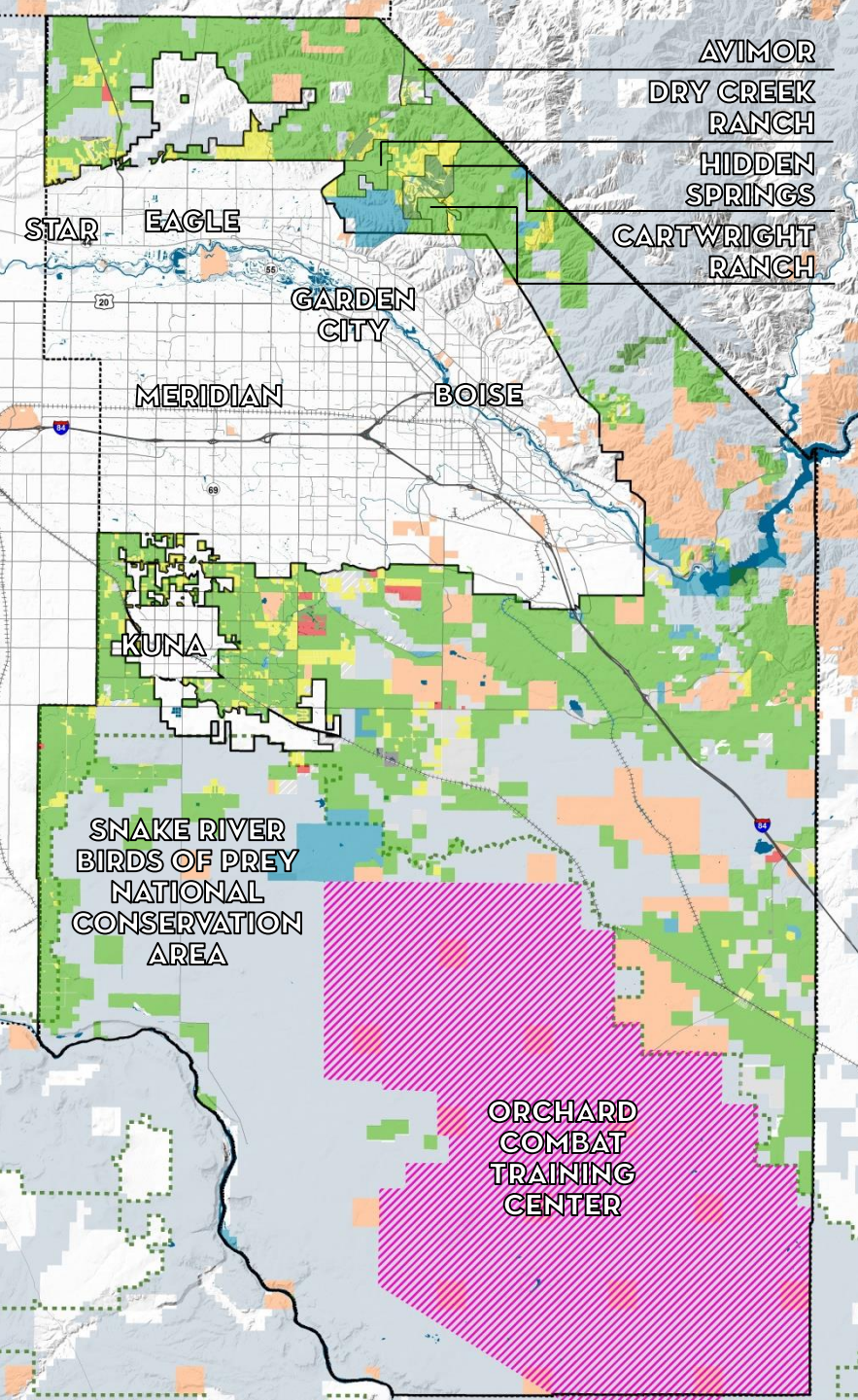
Median income in Ada County (2013)

13.1%

Poverty rate in Ada County (2013)

Current Land Use

Unincorporated Ada County Current Land Use, Excluding City ACIs



Source: COMPASS; Ada County Assessor

Infrastructure & Services

- Much of the County's infrastructure (roads, water, sewer, energy) provided by other public agencies or private providers
- Most County services are constitutionally mandated

WHAT SERVICES DOES ADA COUNTY PROVIDE

- Administration
- Assessor
- Board of County Commissioners
- Clerk of the Fourth District Court
- Coroner
- Development Services
- Elections
- Emergency Management
- Emergency Medical Services
- Expo Idaho
- Indigent Services
- Information Technology
- Juvenile Court Services
- Operations
- Parks and Waterways
- Public Defender
- Prosecutor
- Recorder
- Sheriff and 911
- Weed, Pest, and Mosquito Abatement



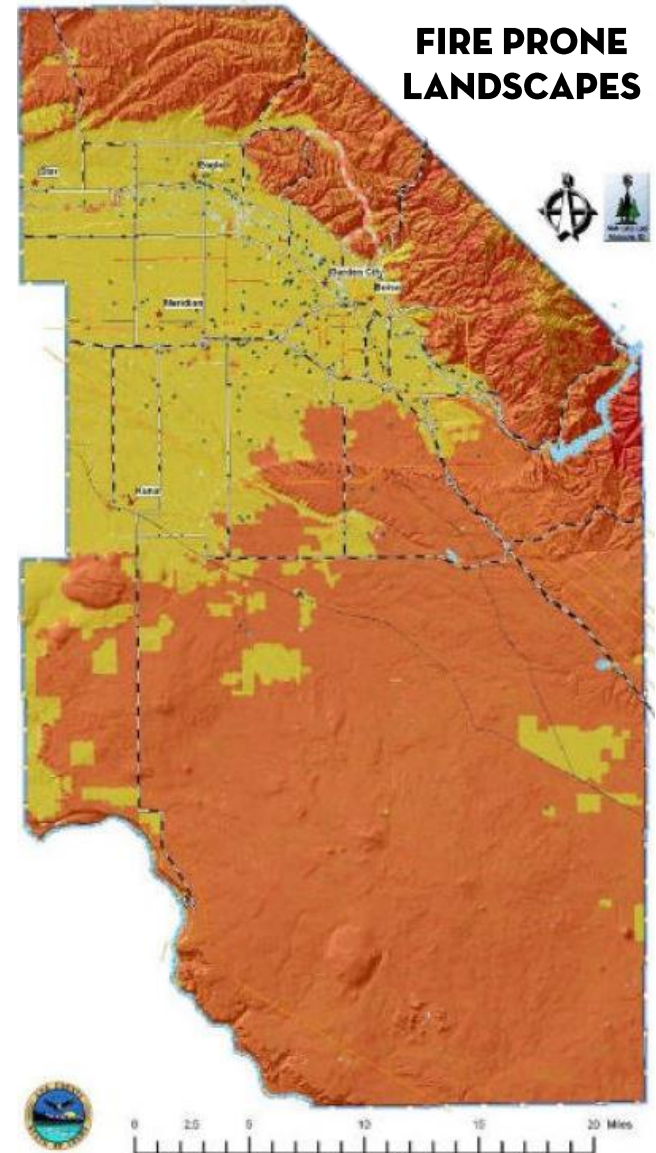
Environment & Natural Resources

- Public (federal and state) agencies play a significant role in land management
- Numerous active open space preservation and trail expansion efforts across the County
- Ada County Open Space Advisory Task Force coordinates with other jurisdictions on trail and greenbelt connections
- Ada County Environmental Advisory Board works on river enhancement projects

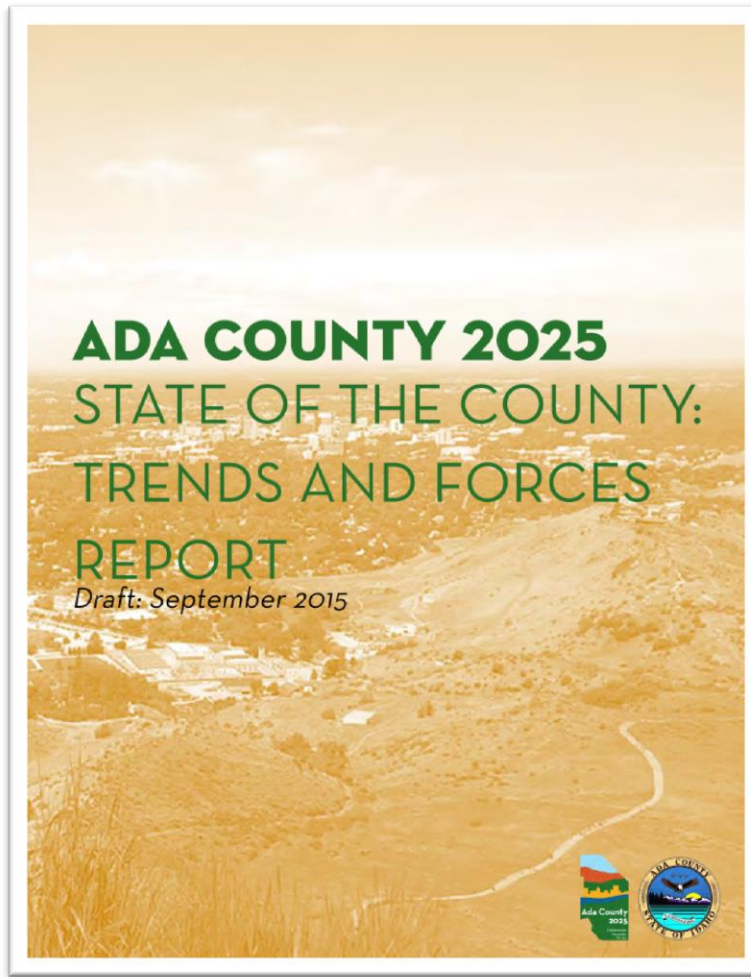


Hazards & Risks

- Some degree of risk from hazards exists countywide
 - Flooding
 - Wildfire
- Dept. of Emergency Management prepares and maintains countywide risk assessment as well as emergency response plans
- Ada County All Hazards Mitigation Plan currently being updated; new FEMA flood maps to be released soon



www.adacounty2025.com



TOPICS COVERED

- Governance
- Population
- Housing
- Economy
- Land Use
- Infrastructure and Services
- Environment and Natural Resources
- Hazards and Risks

ISSUES AND OPPORTUNITIES

WHAT WE'VE HEARD SO FAR...



1: Define a collective vision for the future of Ada County as an organization and service provider.

- Promote a culture of collaboration
- Build a better understanding of what Ada County does
- Promote continuity in leadership
- Explore new funding policies to promote fiscal stability

2: Understand and proactively manage the effects of projected growth on Ada County.

- Develop a long-term strategy for the efficient delivery of county services
- More effective way of categorizing and prioritizing investments
- Improve predictability within and adjacent to Areas of City Impact (ACI)
- Consider the effects of projected growth on transportation systems

3: Create a more accessible Comprehensive Plan with countywide relevance.

- Streamlined and updated policy framework
- Clear linkages to city comprehensive plans and department strategic plans
- Mechanism for implementation and monitoring

4: Confirm key land use concepts and desired land use patterns for Ada County outside of the ACI.

- Planned communities
- Non-farm subdivisions
- Future commercial and industrial land
- Agricultural uses
- Open space
- Sand and gravel reserves
- Regionally significant assets

5: Foster broad community engagement and regional collaboration.

- Comprehensive plan consistency
- Actively engage community stakeholders

Next Steps

- Online workshop: November 2– Mid-December
- Planning Commission and BOCC updates: December 10 & 11
- Staff to present to interested jurisdictions, community boards, community events
- Preliminary policy directions expected in February/March 2016
- 2nd community engagement series March/April 2016

Opportunities for Input

Ada County 2025
Collaborate. Innovate. Thrive.

Home About Participate Documents Events Contact Us

Search

Attend an Event! «
Ada County 2025 will host a variety of events throughout different phases of the process.

Welcome!
Ada County recently initiated *Ada County 2025*, a collaborative, joint planning process to update the Ada County Comprehensive Plan (last updated in 2007) and to develop a new Strategic Business Plan. While closely integrated, each plan has a distinct role to play in Ada County's future. The updated Comprehensive Plan will serve as a policy guide for the growth and physical development of Ada County over the next ten to twenty years. The Strategic Business Plan will establish a vision for countywide service delivery and business decisions within the County organization and identify key initiatives to support its implementation.
Be sure to sign-up for our project newsletter to receive updates about upcoming events and news about the project.

What Do You Think?
What do you think are the most important issues and opportunities facing Ada County? Please share your ideas with us and other members of the community in our online forum.
[Join the Conversation >>](#)

Sign Up For Updates
Want to stay up-to-date on the latest from *Ada County 2025*? Be sure to sign-up for our project newsletter to receive updates about upcoming events and news about the project.
Name:
Email:

Timeline

- Community/Stakeholder Focus Groups (Day 1)
10/27/2015 - 1:00pm to 7:00pm
- Community/Stakeholder Focus Groups (Day 2)
10/28/2015 - 8:30am to 2:30pm
- Phase IV: Preliminary Policy Directions
- Community/Stakeholder Engagement Series #2
03/01/2016 - 12:30pm to 12:30pm



www.adacounty2025.com