



Ada County Landfill

A State-of-the-Art Necessity



ADA COUNTY
LANDFILL
ENVIRONMENTALLY ESSENTIAL



LANDFILL



ADA COUNTY
LANDFILL
ENVIRONMENTALLY ESSENTIAL

Who Needs Landfills—We All Do

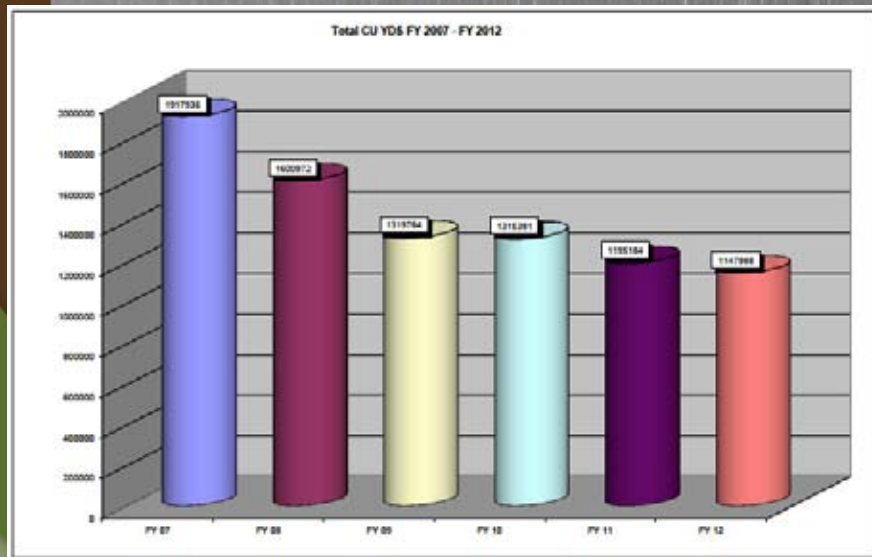
- Where Would We Put Our Waste
- Knee Deep In Rubbish
- Landfill Is Organized, Sanitary
Trash Disposal
- Efficient & Thoughtful Waste Handling



ADA COUNTY
LANDFILL
ENVIRONMENTALLY ESSENTIAL

Self-Supporting—No Tax Dollars

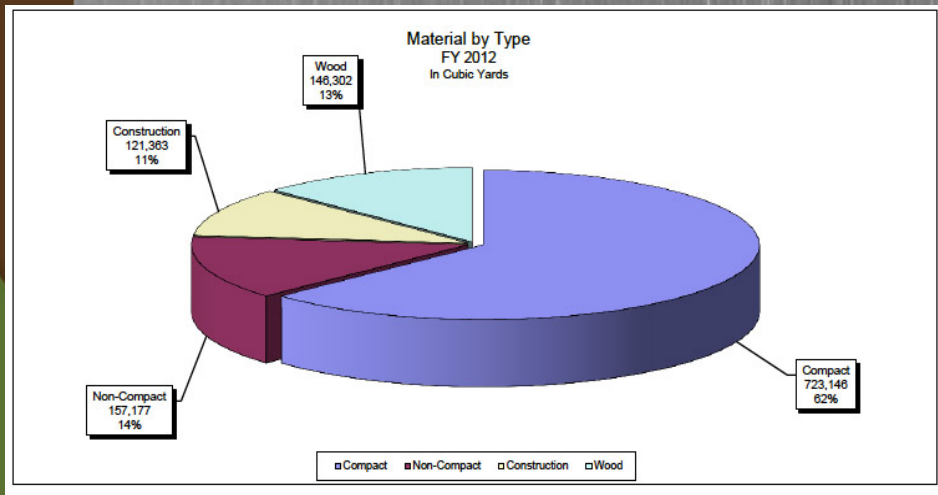
- User Fees Collected At Gate
- Money Used To Operate & Upgrade



ADA COUNTY
LANDFILL
ENVIRONMENTALLY ESSENTIAL

Types Of Trash

- Wide Variety of Waste
- Requires Constant Attention



ADA COUNTY
LANDFILL
ENVIRONMENTALLY ESSENTIAL

Hazardous Waste

- Annual Household Hazardous Waste Collection



ADA COUNTY
LANDFILL
ENVIRONMENTALLY ESSENTIAL

Hazardous Waste

- Permanent Collection Facility
- Free For Most County Residents
- Open Friday & Saturday
- Also Used To Recycle Discarded Items



ADA COUNTY
LANDFILL
ENVIRONMENTALLY ESSENTIAL

Bring Us Your TVs & Computer Screens

- Electronics Components Can Be Hazardous
- Cathode Ray Tubes Contain Lead
- Hazardous To Environment



ADA COUNTY
LANDFILL
ENVIRONMENTALLY ESSENTIAL

“Wood” You Like To Recycle

- Started At 10,000 Cubic Yards
- Last Year, 145,000 Cubic Yards
- Recycling Success Story



ADA COUNTY
LANDFILL
ENVIRONMENTALLY ESSENTIAL

Gas-To-Energy

- Uses Landfill Gas To Generate Energy
- Currently Powering 2,400 Homes
- Burned Through “Flaring”



ADA COUNTY
LANDFILL
ENVIRONMENTALLY ESSENTIAL

Extending Landfill Life

- Reducing What We Bury
- Hidden Hollow Getting Closer To Capacity



ADA COUNTY
LANDFILL
ENVIRONMENTALLY ESSENTIAL

North Ravine Cell Being Prepared



ADA COUNTY
LANDFILL
ENVIRONMENTALLY ESSENTIAL

Keeping Up With Changing Needs

- Careful Planning
- Evolving Regulations
- Efficient Operation
- Meet Waste Disposal Needs For Generations

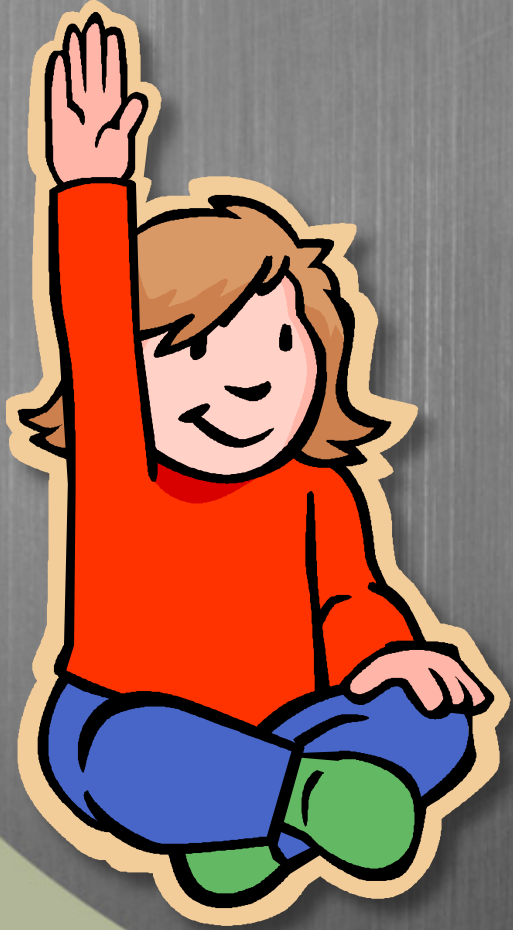


ADA COUNTY
LANDFILL
ENVIRONMENTALLY ESSENTIAL

Nobody's Perfect
Necessary Service, But...
We Can Always Do Better
...And We Will



ADA COUNTY
LANDFILL
ENVIRONMENTALLY ESSENTIAL



Questions?

Ted Hutchinson

Ada County Landfill

Phone: (208) 577-4725

Email: thutchinson@adaweb.net



ADA COUNTY
LANDFILL
ENVIRONMENTALLY ESSENTIAL