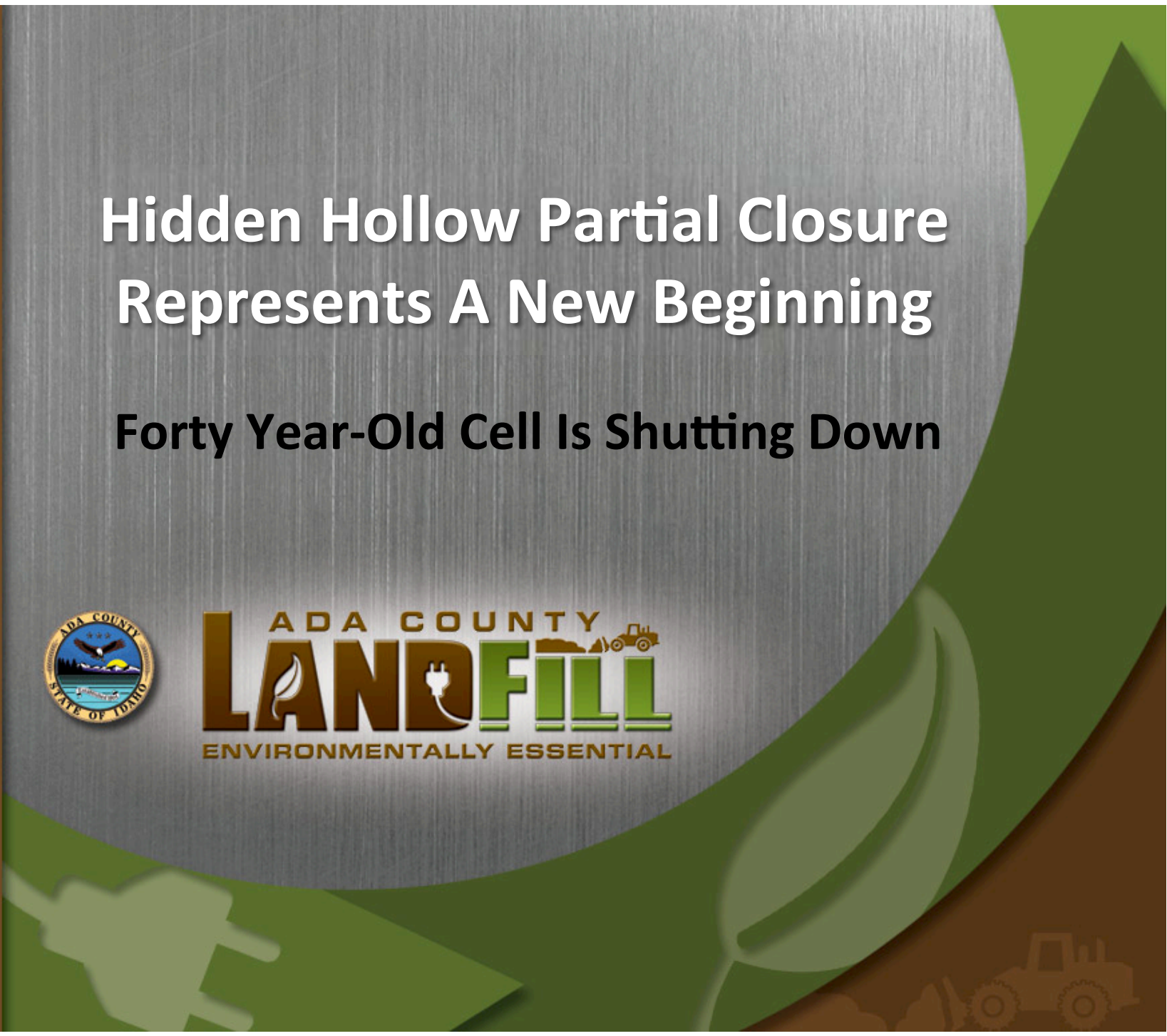
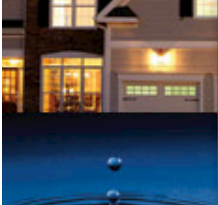


Hidden Hollow Partial Closure Represents A New Beginning

Forty Year-Old Cell Is Shutting Down



ADA COUNTY
LANDFILL
ENVIRONMENTALLY ESSENTIAL



Shutting Landfill Is Complicated Process



- Must Be Closed According To Regulations



- Drawings & Specifications For Cover



- Need Oversight (Management)



ADA COUNTY
LANDFILL
ENVIRONMENTALLY ESSENTIAL

Shutting Landfill Is Complicated Process

- Schedule & Costs
- Review By
Regulatory
Agencies & Public



ADA COUNTY
LANDFILL
ENVIRONMENTALLY ESSENTIAL

Cover Material

- Perfect Cover Material
Already Available On Site

- Soil Consistency
Will Prevent
Contamination

- Even After Closure,
Must Monitor For
At Least 30 Years



ADA COUNTY
LANDFILL
ENVIRONMENTALLY ESSENTIAL

Reclaiming The Land

- Columbia Village Sports Complex Was Landfill
- 160-acre Site Now Houses 20 Soccer & 16 Baseball Fields



- Open Playing Fields Allow Ground To Vent

ADA COUNTY
LANDFILL
ENVIRONMENTALLY ESSENTIAL

Hidden Hollow Site Will Close Slowly



- About Half Already Capped



- Will Accept Some Waste For Up To 10 Years



- 60 Acres Left To Cover



ADA COUNTY
LANDFILL
ENVIRONMENTALLY ESSENTIAL

North Ravine Already In Operation



- Modern Lined Landfill



- Opened in 2007



- Eventually Provide 260 Acres Of Lined Space



ADA COUNTY
LANDFILL
ENVIRONMENTALLY ESSENTIAL

All Ada County Landfill Under Same Air Permit



- Hidden Hollow Collection System
 - 195 Deep Wells
 - 18 Surface Collectors
 - 21 Perimeter Wells
 - 32 Horizontal Collectors



- North Ravine Collection System
 - Six Horizontal Collectors



- More Will Be Added
- As Needed



ADA COUNTY
LANDFILL
ENVIRONMENTALLY ESSENTIAL

Both Sites Subject To Groundwater Monitoring



- Even After Closure
Monitoring Must Continue



- Closure Will Be
Environmentally-Friendly



- Well-Run
Landfill Improves
Standard Of
Living



ADA COUNTY
LANDFILL
ENVIRONMENTALLY ESSENTIAL

Return Land To Its Original State



ADA COUNTY
LANDFILL
ENVIRONMENTALLY ESSENTIAL

Contact Information

Selena O'Neal, CEM, LEED AP
Energy Specialist

Phone: 208-287-7106

Email: soneal@adaweb.net



ADA COUNTY
LANDFILL
ENVIRONMENTALLY ESSENTIAL