



Ada County Juvenile Court Services (ACJCS)

A Report Card to Our Stakeholders
January – December 2012

Our Vision

To be the foremost juvenile justice organization in the USA by proactively working to eliminate juvenile crime and educate our community on juvenile justice

Our Mission

To provide professional services that build, reinforce, and sustain skills to enhance the lives of youth and families

Our Agency Values

Commitment, Diversity, Fairness, Integrity, Trust

Ada County Juvenile Court Services
Janet M. Wallace, Director

Main Office
6300 W. Denton Street
Boise, Idaho 83704
208-577-4800



A Report Card to Our Stakeholders

LETTER FROM THE DIRECTOR



To Our Community

At ACJCS, we never lose sight of The Balanced Approach philosophy. This philosophy supports accountability, community protection and rehabilitation of offenders while advocating for victim's rights. 2012 began with eager anticipation of the various ways Ada County Juvenile Court Services would positively influence juveniles in our programs, community families and the community as a whole. Once again, the department did not disappoint.

Always looking to improve our services and knowledge base, ACJCS employees, Juvenile Court Judges and Prosecutors participated in eight conferences across the country. These conferences were a great way to share information on our programs and learn about others that might benefit our community. Employees also received over 2,500 hours of training throughout the year.

We were excited to get the first phase of our Detention Center renovation completed. The remodeled day room and special training classroom brightened up the Center and made it a more comfortable environment for the residents. New video equipment and white boards lend a helping hand to specialized training for employees and small group programs instruction for residents. We now offer instruction in 37 different small groups, which help our residents become contributing members to our community in a positive way.

The Programs Division saw all its Clinicians trained in Solution Focused Therapy which will give staff a common approach to work with clients and customers. Our Community Service crews partnered with the US Department of Agriculture and the US Forest Service on numerous projects relating to rangeland management. One project involved reseeding 250 acres destroyed by a wildfire.

Probation Services looked to non-traditional ways to work with juveniles. 2012 saw the team challenge juveniles with a Cross-Fit Program, implement PO Check, and some PO's earned certification to administer Tests of Adult Basic Education to juveniles in the GED program!

We were honored to have two of our employees recognized as the District 4 Line Worker and Administrator of the Year. As we forge into 2013, we're excited about the future of our organization and the great work we do for our community!

Sincerely

A handwritten signature in black ink that reads "Janet M. Wallace".

Janet M. Wallace, Director

Letter from the Director

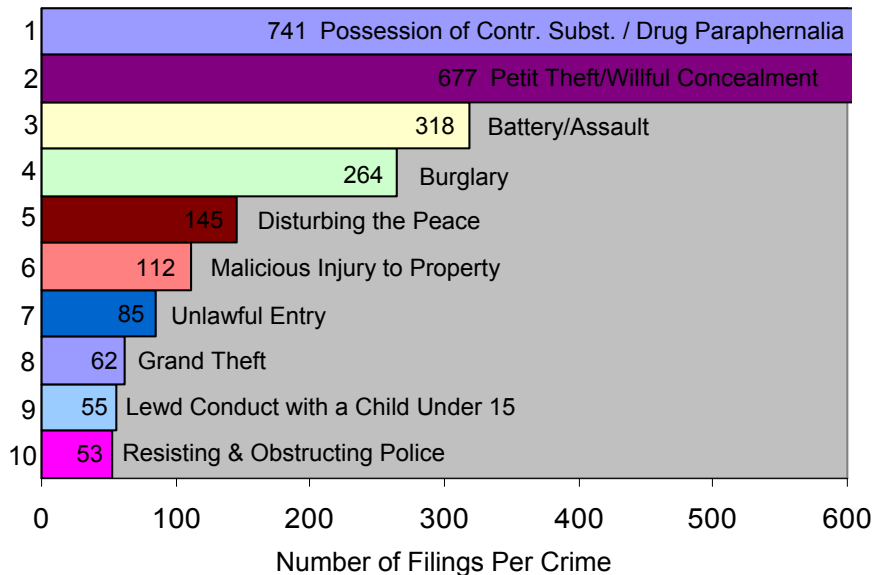
A Report Card to Our Stakeholders

ACJCS CRIME FACTS

JUVENILE CRIME:

In 2012, law enforcement agencies arrested or referred nearly 1,900 juveniles for 4,000 law violations alleged to have been committed in Ada County. The Prosecuting Attorney evaluates each police report and determines whether the case should be dismissed, diverted, or charged (filed) by formal petition.

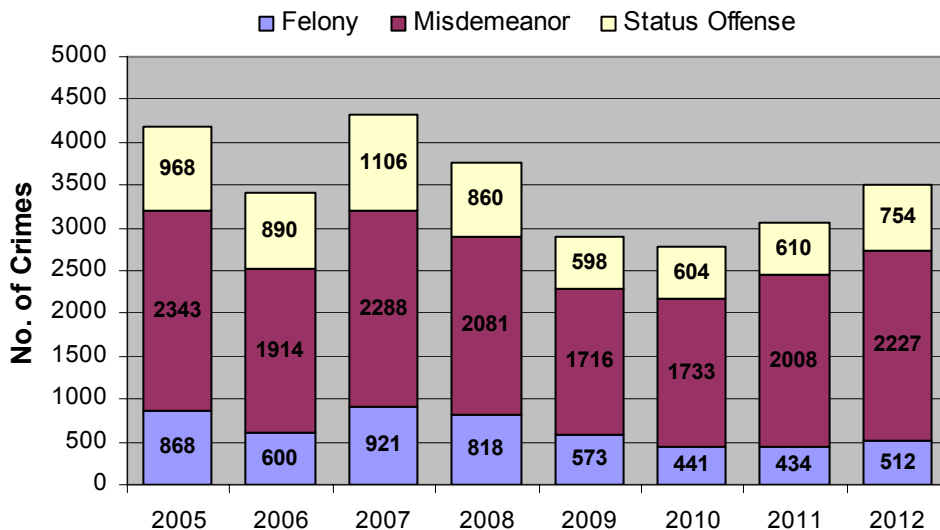
Top 10 Crimes Filed in Juvenile Court



SEVERITY OF LAW VIOLATIONS:

Misdemeanor crimes averaged 64% of all law violations filed in Juvenile Court, followed by status offenses (such as Runaway and Curfew) at 22%, and then by felony crimes at 15%.

Law Violations Filed in Juvenile Court



A Report Card to Our Stakeholders

VICTIM SERVICES

Vision Statement: *“Proactively responding to victims of juvenile crime in a manner that is restorative and meaningful.”*

The Victim Impact Program provides informative and restorative services to victims of juvenile crime, including victim advocacy and restitution.



Victim Advocacy = 445 clients
Restitution Services = 345 clients
Restitution Collected = \$79,046

VICTIM ADVOCACY

- Assists victims throughout the court process and keeps them informed and updated on their cases; and accompanies them to court as needed.
- Serves as liaison between victims and the various personnel within the court system.
- Provides elder abuse safeguarding tips to seniors 65+ who are victims of juvenile crime, to help them identify and prevent future abuse.
- Conducts Victim Impact Panels to bridge the gap between juvenile offenders and their community, which helps offenders understand the impact their crime/s have in the community.
- Screens letters of apology from juvenile offenders for appropriateness, empathy, and sincerity to provide for victim closure.



RESTITUTION SERVICES:

- Assists victims in filing a restitution claim with the court.
- Victims may receive financial compensation from juvenile offenders to restore what was lost.

Victim Services

A Report Card to Our Stakeholders

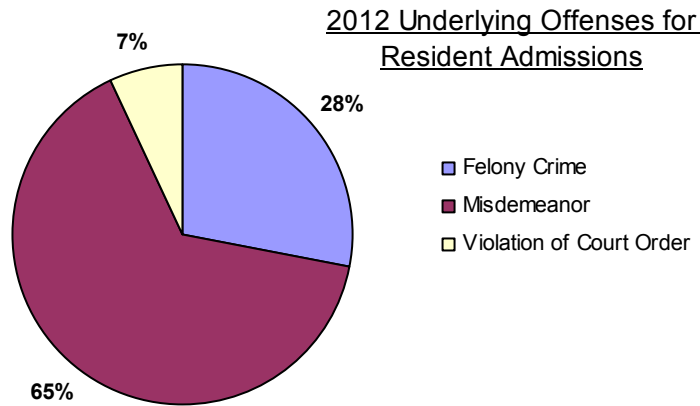
DETENTION SERVICES

DETENTION POPULATION:

We admitted 1,166 residents in 2012 (76% male and 24% female), including 155 juveniles held for other jurisdictions.

Number of admissions were down 20% from 2011. Daily population decreased, while length of stay rose due to expanded intensive treatment programming.

Masters-level teachers from the Boise School District provide instruction to detention residents 5 days per week. From July 2012 through Dec. 2012, residents earned 66 high school credits, and passed 27 GED tests.



MEDICAL SERVICES:

Our medical department maintained its accreditation with the National Commission on Health Care in 2012.

Residents receive mental health services, health education, counseling, STD and HIV testing, immunizations, and prescription services.

FOOD SERVICES:

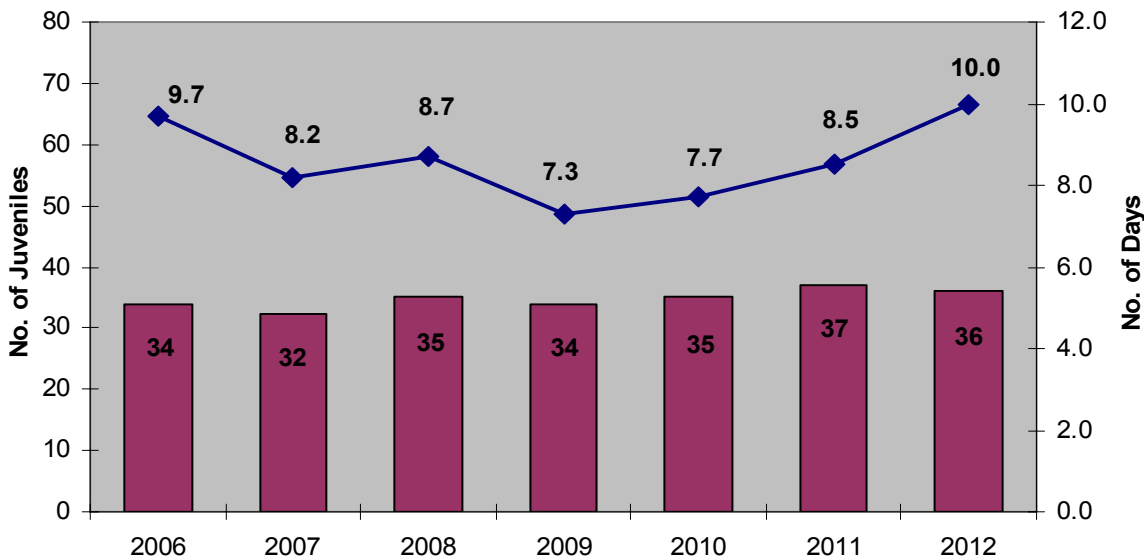
Detention & Program Meals = 36,251
Detention & Program Snacks = 12,226

Our Food Service Department consistently receives high quality ratings from Central District Health.

240 residents were assessed "at risk" for suicide when they arrived, but only 1 attempted (no hospitalization required).

Average Daily Population & Length of Stay

■ Average Daily Population ◆ Average Length of Stay



Competency
&
Development

Accountability, &

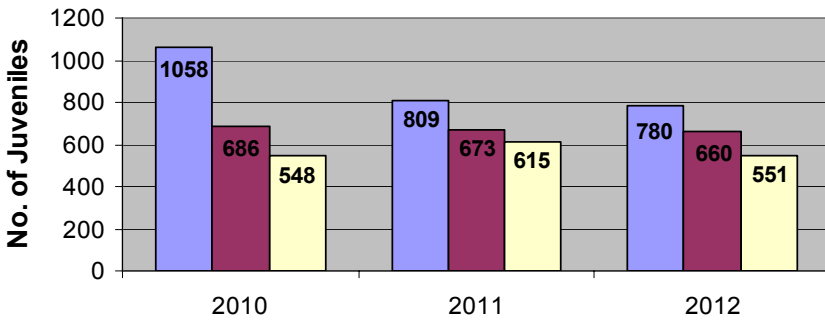
Community
Protection,

A Report Card to Our Stakeholders

DIVERSION & PROBATION SERVICES

Diversion Services

■ Total Referrals
■ New Diversion Terms
■ Successful Terms Completion



DIVERSION:

Participation in the Diversion Program is an option sometimes granted by the Prosecuting Attorney to youth typically referred for low level offenses with no prior referrals. If the youth agrees to and completes conditions outlined in a contract, such as community service work and restitution payment in full, then the referring charge is dismissed.

DETENTION ALTERNATIVE MONITORING:

Electronic Monitoring and In-Home Detention are examples of the Conditional Release Order (CRO) monitoring program, which provides court-sanctioned alternatives to detention for juveniles not posing serious risk to the community. Our probation officers monitored 705 CROs in 2012.

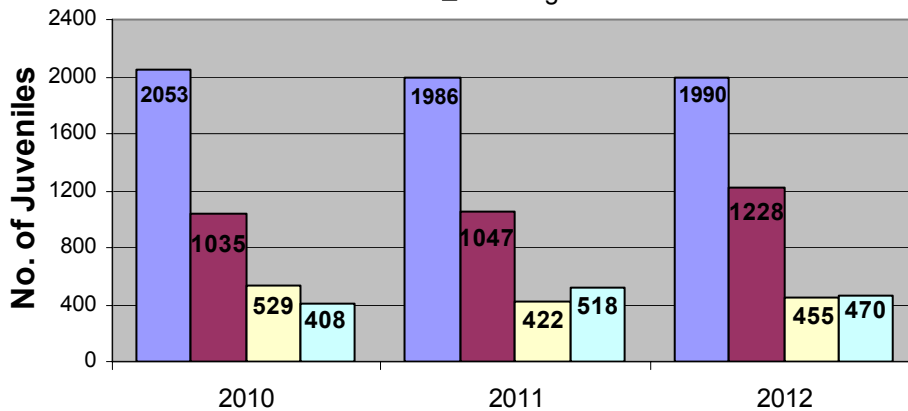
PROBATION CASELOAD SNAPSHOT IN TIME:

On 12/31/12, the agency's caseload consisted of 72% males and 28% females, and included:

- 50% on probation in the community
- 20% on diversion referral or contract
- 25% pending court hearings
- 5% in state custody

Probation Services

■ Total Supervised - Formal & Informal
■ New Probation Decrees
■ Total Discharged
■ Pending



COURT INVESTIGATION & FIELD PROBATION SERVICES:

Probation Officers are responsible for monitoring cases while following the Balanced Approach to restorative justice. Court Investigation Officers conduct comprehensive interviews and assessments of each juvenile who comes into jurisdiction of the court (is pending), and they provide recommendations for court disposition. Field Probation Officers are responsible for supervising youth who have been placed on probation and they monitor compliance with court ordered terms. They also refer youth and parents to programs such as community service, mental health counseling, substance abuse treatment, anger management, Life Skills, and educational and vocational programs.

Competency & Development
 Accountability, &
 Community Protection,

A Report Card to Our Stakeholders

PROGRAMS & OTHER SERVICES

CLINICAL COUNSELING SERVICES:

The Clinical Program is licensed to provide substance abuse and mental health assessments and services for youth involved in juvenile court.

Drug/Alcohol Assessments = 397
 Outpatient Treatment = 75 clients
 Intensive Treatment = 54 clients
 Juvenile Drug Court = 32 clients
 Temporary Foster Care = 3 clients
 Individual/Family Counseling = 115 clients

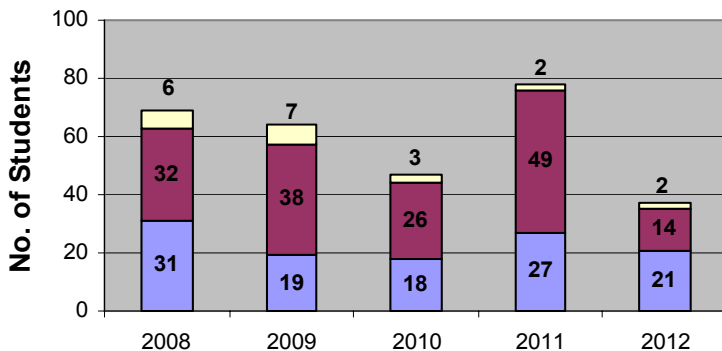
VICTORY ACADEMY:

An educational program for suspended or expelled high school students, Victory Academy partners with Boise School District and Idaho Youth Ranch. Students work on self-paced curricula aligned with state and district standards or GED, and participate in collective art and creative writing projects.

Number of Credit-Earning Students = 61
 Number of GED Students = 28
 Credits Earned = 138
 GED Tests Taken = 48
 Successful Transition = 18 students
 Attained GED/HSE/Diploma = 10 students

Attendance Court Referrals

- Closed Unsuccessfully
- School District Transfer, Aged Out, Unknown Outcome, or Still Open
- Closed Successfully



ATTENDANCE COURT:

A prevention program targeting elementary students with chronic school attendance problems. Partnering with the Boise and Meridian school districts, the court develops individual plans and monitors compliance to assist families to improve their child's attendance.

COMMUNITY SERVICE:

Total Referrals = 774
 Successful Completions = 520
 Total Hours Served = 20,898
 Value of Service = \$151,510

Juveniles work in the community to make amends for the harm their crimes caused.

WORK IN LIEU OF DETENTION:

Total Referrals = 203
 Successful Completions = 187
 Total Hours Served = 5,255
 Value of Service = \$38,100

CRIME PREVENTION PROGRAM:

Educating at-risk middle school youth about the laws and consequences of juvenile crime, this program operates through partnerships with the Boise and Meridian school districts.

Law Related Education

3,785 students
 (108 presentations)

Small Group Curriculum

148 students
 (23 groups)

Competency & Development
 Accountability, &
 Community Protection,