



Ada County Juvenile Court Services (ACJCS)

A Report Card to Our Stakeholders
January – December 2011

Our Vision

To be the foremost juvenile justice organization in the USA by proactively working to eliminate juvenile crime and educate our community on juvenile justice

Our Mission

To provide professional services that build, reinforce, and sustain skills to enhance the lives of youth and families

Our Agency Values

Commitment, Diversity, Fairness, Integrity, Trust

Ada County Juvenile Court Services
Janet M. Wallace, Director

Main Office
6300 W. Denton Street
Boise, Idaho 83704
208-577-4800



A Report Card to Our Stakeholders

LETTER FROM THE DIRECTOR



To Our Community

What a great year it was for the men and women of Ada County's Juvenile Court Services (ACJCS). We implemented new programs in every division, which help ensure we are offering top services to our clients.

With continued support from the Annie E. Casey Foundation, several employees traveled to Portland, Oregon, to learn about Multnomah County's premier juvenile organization and facility. We came back filled with great ideas for making our organization even stronger.

Our Clinical Division underwent big changes. One of which was to expand the capacity of the Substance Abuse Services (SAS) Program from 8 to 12 participants, while restructuring programming to better prepare participants for the transition back into their homes. It has been a tremendous success!

The Community Service Program continues to amaze everyone with their work, and they are sought out by local nonprofits to lend a helping hand. One of their biggest ventures in 2011 was teaming with the Ada County Highway District and the City of Boise Watershed Department to tackle the storm drain marking initiative. Crews worked on mapping, marking, and upgrading all the storm drains in Ada County, and will continue this project through much of 2012.

With the addition of a Training Manager in late 2010, we expanded the internal professional development of all employees. In 2011, we provided over thirty department-level classes with subjects such as suicide prevention and under-age drinking trends. What a huge difference it has made to have a dedicated Training Manager!

Probation continued to see success in the GED Study Program. We had 25 clients participate, with 23 TABE tested by the GED support staff. Three participants successfully earned their GED.

2011 saw Detention, with help from Community Service, build, plant and harvest a Detention Garden. Our clients in Detention received education on what they planted and the Detention Kitchen printed on daily menus what items from the garden were used in their meals. We can't wait for a bigger and better garden in 2012!

In all we do, we never lose sight of The Balanced Approach philosophy. This philosophy supports accountability, community protection and rehabilitation of offenders while advocating for victims' rights. The Victim's Rights Amendments to the Idaho Constitution provides guidance as we work with victims, as well as offenders, to ensure victims' needs for restorative justice are satisfied.

We look forward to providing continued excellence in all our programs as we work with members of our community.

Sincerely

Janet M. Wallace, Director

Letter from the Director

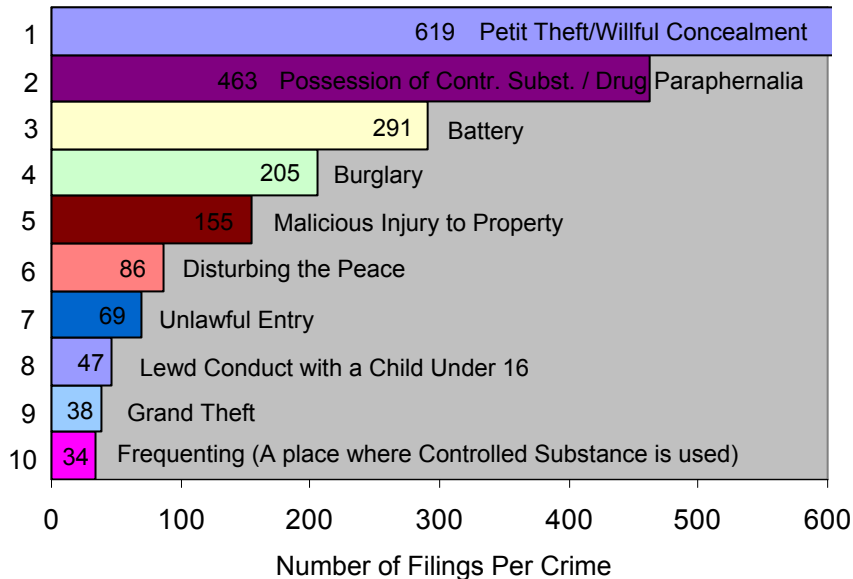
A Report Card to Our Stakeholders

ACJCS CRIME FACTS

JUVENILE CRIME:

In 2011, law enforcement agencies arrested or referred nearly 2,000 juveniles for 3,700 law violations alleged to have been committed in Ada County. The Prosecuting Attorney evaluates each police report and determines whether the case should be dismissed, diverted, or charged (filed) by formal petition.

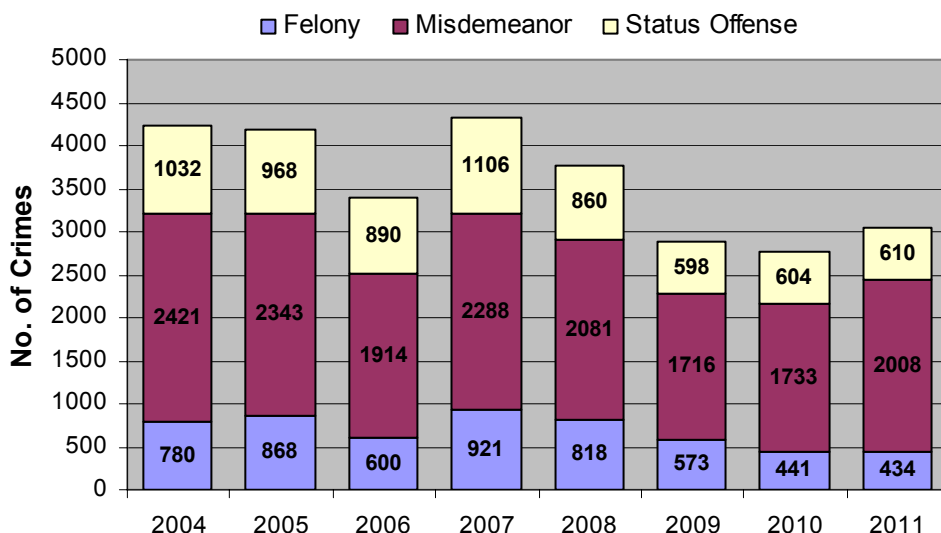
Top 10 Crimes Filed in Juvenile Court



SEVERITY OF LAW VIOLATIONS:

Misdemeanor crimes averaged 66% of all law violations filed in Juvenile Court, followed by status offenses (such as Runaway and Curfew) at 20%, and then by felony crimes at 14%.

Law Violations Filed in Juvenile Court



A Report Card to Our Stakeholders

VICTIM SERVICES

Vision Statement: *“Proactively responding to victims of juvenile crime in a manner that is restorative and meaningful.”*

The Victim Impact Program provides informative and restorative services to victims of juvenile crime, including victim advocacy and restitution.



Victim Advocacy = 467 clients
Restitution Services = 315 clients
Restitution Collected = \$81,183

VICTIM ADVOCACY

- Assists victims throughout the court process and keeps them informed and updated on their cases; and accompanies them to court as needed.
- Serves as liaison between victims and the various personnel within the court system.
- Provides elder abuse safeguarding tips to seniors 65+ who are victims of juvenile crime, to help them identify and prevent future abuse.
- Conducts Victim Impact Panels to bridge the gap between juvenile offenders and their community, which helps offenders understand the impact their crime/s have in the community.
- Screens letters of apology from juvenile offenders for appropriateness, empathy, and sincerity to provide for victim closure.



RESTITUTION SERVICES:

- Assists victims in filing a restitution claim with the court.
- Victims may receive financial compensation from juvenile offenders to restore what was lost.

Victim Services

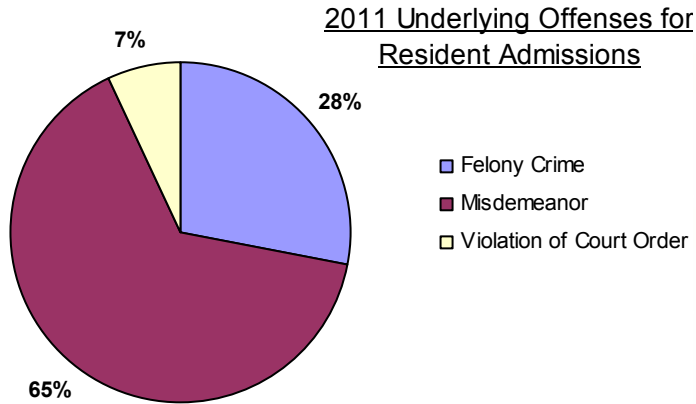
A Report Card to Our Stakeholders

DETENTION SERVICES

DETENTION POPULATION:

We admitted 1,440 residents in 2011 (76% male and 24% female), including 175 juveniles held for other jurisdictions. Number of admissions were virtually unchanged from 2010, while daily population and length of stay increased slightly.

Masters-level teachers from the Boise School District provide instruction to detention residents 5 days per week. From July 2011 through Dec. 2011, residents earned 43 high school credits, passed 2 high school equivalency test, passed 20 GED tests, and 1 juvenile completed the GED.



MEDICAL SERVICES:

Our medical department maintained its accreditation with the National Commission on Health Care in 2011.

Residents receive mental health services, health education, counseling, STD and HIV testing, and prescription services.

FOOD SERVICES:

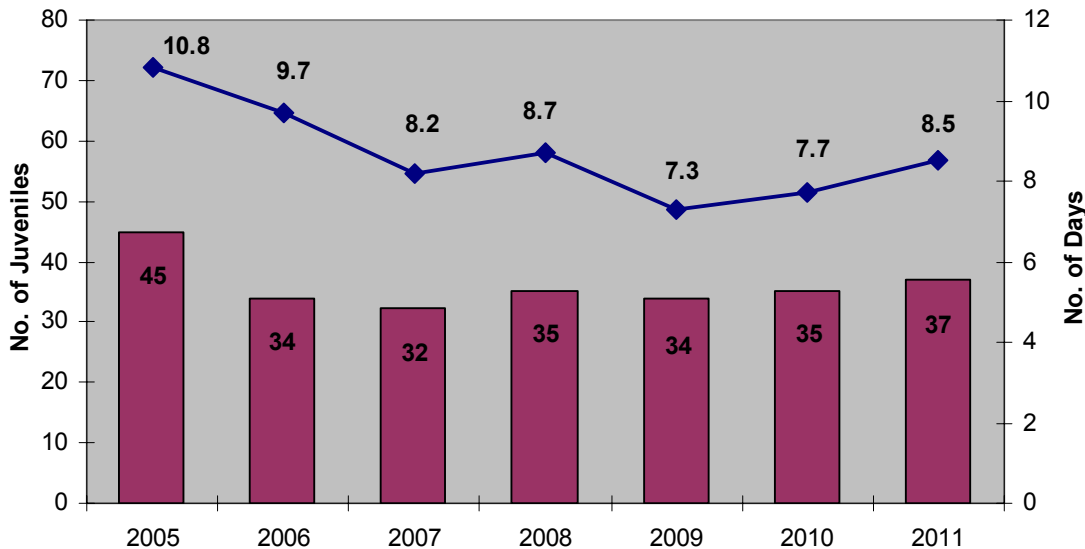
Detention & Program Meals = 36,595
 Detention & Program Snacks = 12,330

Our Food Service Department consistently receives high quality ratings from Central District Health.

200 residents were assessed "at risk" for suicide when they arrived, but only 4 attempted (no hospitalization required).

Average Daily Population & Length of Stay

■ Average Daily Population ◆ Average Length of Stay

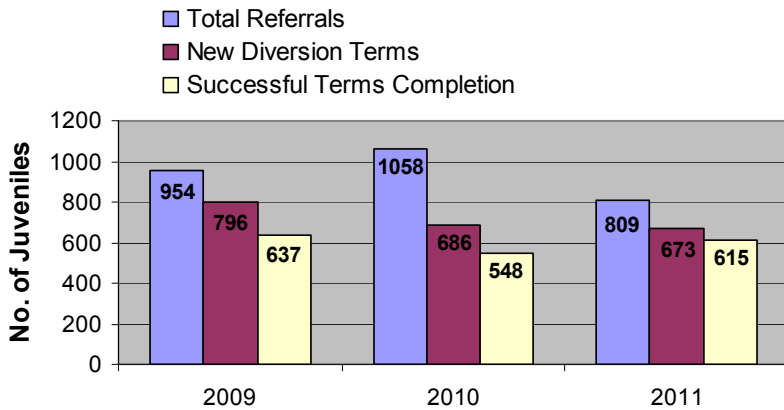


Competency & Development
 Accountability, &
 Community Protection,

A Report Card to Our Stakeholders

DIVERSION & PROBATION SERVICES

Diversion Services



DIVERSION:

Participation in the Diversion Program is an option sometimes granted by the Prosecuting Attorney to youth typically referred for low level offenses with no prior referrals. If the youth agrees to and completes conditions outlined in a contract, such as community service work and restitution payment in full, then the referring charge is dismissed.

DETENTION ALTERNATIVE MONITORING:

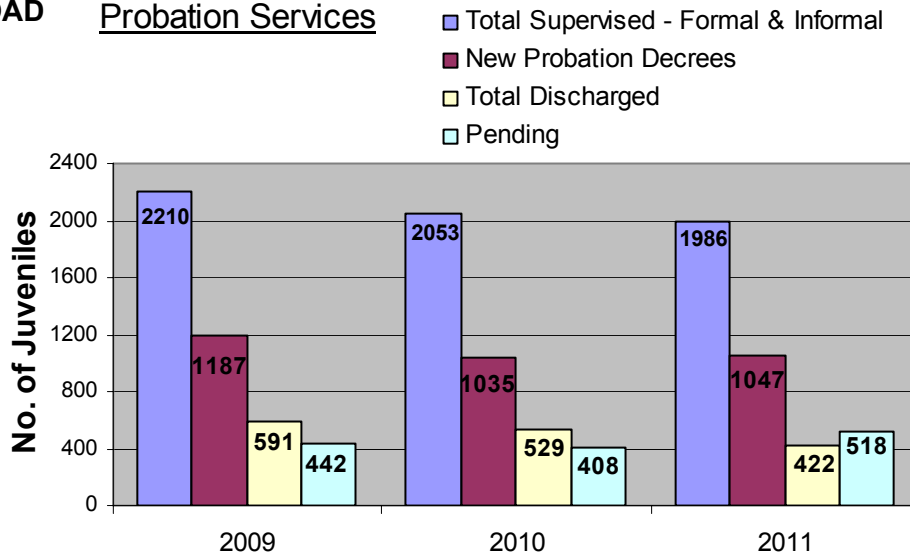
Electronic Monitoring and In-Home Detention are examples of the Conditional Release Order (CRO) monitoring program, which provides court-sanctioned alternatives to detention for juveniles not posing serious risk to the community. Our probation officers monitored 823 CROs in 2011.

PROBATION CASELOAD SNAPSHOT IN TIME:

On 12/31/11, the agency's caseload consisted of 70% males and 30% females, and included:

- 50% on probation in the community
- 21% on diversion referral or contract
- 24% pending court hearings
- 5% in state custody

Probation Services



COURT INVESTIGATION & FIELD PROBATION SERVICES:

Probation Officers are responsible for monitoring cases while following the Balanced Approach to restorative justice. Court Investigation Officers conduct comprehensive interviews and assessments of each juvenile who comes into jurisdiction of the court (is pending), and they provide recommendations for court disposition. Field Probation Officers are responsible for supervising youth who have been placed on probation and they monitor compliance with court ordered terms. They also refer youth and parents to programs such as community service, mental health counseling, substance abuse treatment, anger management, Life Skills, and educational and vocational programs.

Competency & Development
Accountability, &
Community Protection,

A Report Card to Our Stakeholders

PROGRAMS & OTHER SERVICES

CLINICAL COUNSELING SERVICES:

The Clinical Program is licensed to provide substance abuse and mental health assessments and services for youth involved in juvenile court.

Drug/Alcohol Assessments = 300
 Outpatient Treatment = 38 clients
 Intensive Treatment = 48 clients
 Juvenile Drug Court = 42 clients
 Temporary Foster Care = 5 clients
 Individual/Family Counseling = 241 clients

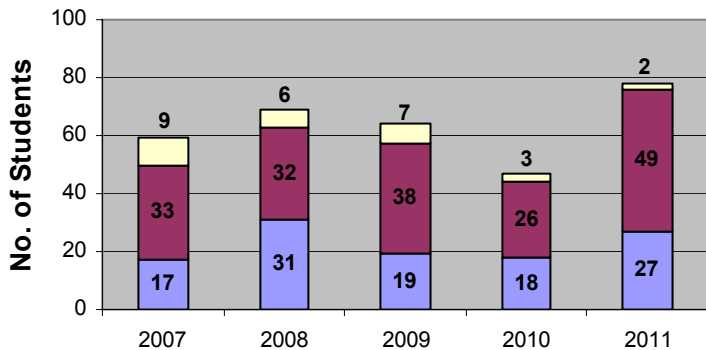
VICTORY ACADEMY:

An educational program for suspended or expelled high school students, Victory Academy partners with Boise School District and Idaho Youth Ranch. Students work on self-paced curricula aligned with state and district standards or GED, and participate in collective art and creative writing projects.

Number of Credit-Earning Students = 52
 Number of GED Students = 34
 Credits Earned = 190
 GED Tests Taken = 59
 Successful Transition = 19 students
 Attained GED/HSE/Diploma = 12 students

Attendance Court Referrals

- Closed Unsuccessfully
- School District Transfer, Aged Out, Unknown Outcome, or Still Open
- Closed Successfully



ATTENDANCE COURT:

A prevention program targeting elementary students with chronic school attendance problems. Partnering with the Boise and Meridian school districts, the court develops individual plans and monitors compliance to assist families to improve their child's attendance.

COMMUNITY SERVICE:

Total Referrals = 1,000
 Successful Completions = 886
 Total Hours Served = 22,605
 Value of Service = \$163,886

Juveniles work in the community to make amends for the harm their crimes caused.

WORK IN LIEU OF DETENTION:

Total Referrals = 272
 Successful Completions = 215
 Total Hours Served = 7,253
 Value of Service = \$52,585

CRIME PREVENTION PROGRAM:

Educating at-risk middle school youth about the laws and consequences of juvenile crime, this program operates through partnerships with the Boise and Meridian school districts.

Law Related Education

2,060 students
 (68 presentations)

Small Group Curriculum

130 students
 (24 groups)

Competency & Development
 Accountability, &
 Community Protection,